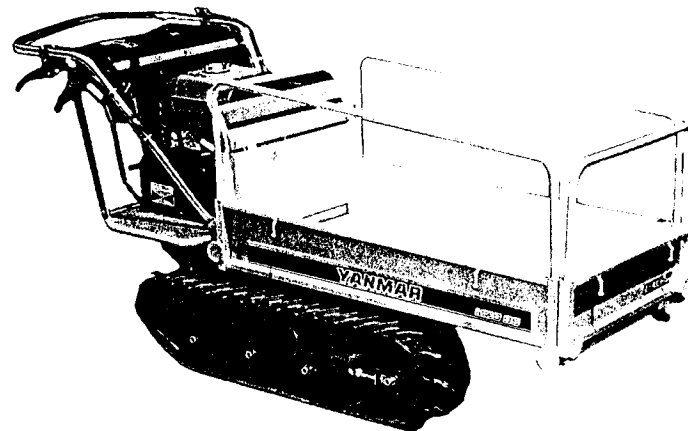


**YANMAR GASOLINE
CARRIER
MCG95**

PARTS CATALOG

NPC-2945



YANMAR AGRICULTURAL EQUIPMENT CO.,LTD.

CONTENTS

YOUR PARTS ORDERING.....	1A02
SPECIFICATIONS.....	1A03
TABLE OF DETAILS OF SPECIFICATIONS	1A03

ENGINE UNIT(GA120E-SCKM)	1B02
GROUP NO. GROUP NAME	
1. CYLINDER BLOCK	1B03
2. CYLINDER HEAD & BONNET	1B04
3. TOOL & LABEL	1B05
4. AIR CLEANER & MUFFLER	1B06
5. CRANKSHAFT,PISTON & CAMSHAFT	1B07
6. FUEL OIL TANK & FUEL OIL LINE	1B08
7. CARBURETOR	1B10
8. GOVERNOR & CONTROL DEVICE	1B12
9. FLY.MAGNET & STARTING DEVICE	1B13
PULLEY & TENSION SECTION	1C02
1. TENSION ARM	1C03
2. PULLEY	1C04
FRAME SECTION	1C05
3. BODY FRAME	1C06
TRAVELING SECTION	1C07
4. IDLER	1C08
5. TRACK ROLLER	1C09
6. TRANSMISSION CASE	1C10
7. INPUT SHAFT	1C11
8. 2ND SHAFT	1C12
9. SIDE CLUTCH SHAFT	1C13
10. AXLE	1C14
11. BRAKE	1C15
12. SIDE CLUTCH	1C16
13. MAIN CHANGE	1D01
CONTROL SECTION	1D02
14. HANDLE	1D03

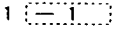
GROUP NO.	GROUP NAME	
15.	TRAVEL LEVER 1D05
16.	BRAKE LEVER 1D06
17.	MAIN CHANGE LEVER 1D07
18.	SIDE CLUTCH LEVER 1D08
22.	DEADMAN LEVER(ADD. ITEM 1D09
	PLATFORM CARRIER SECTION 1D10
19.	PLATFORM CARRIER 1D11
	TOOLS, ACCESSORIES & LABELS SEC 1D12
20.	LABELS 1D13
21.	TOOLS & ACCESSORIES 1D14
23.	LABELS(ADD. ITEM 1D15
	PARTS INDEX 1M01
	FICHE INDEX M16

YOUR PARTS ORDERING

- When placing your parts order with us, Please contact us upon confirming the Model, Part No, Description and Q'ty of the parts you want to order by this parts catalog. First look for the illustration of the part you want. Then you can find out the necessary informations by tracing the illustration No., as each illustration corresponds to the parts list on the following page.
- All parts the illustrations of which are not numbered shall not be sold separately.
- You are asked to prepare parts, especially consumable parts in the demand season earlier, as orders will come with a rush in this season.
- Parts other than those due to misshipping on your part shall not be allowed to returned in principle.
- Please surely use YANMAR Genuine Parts in any YANMAR Product.
(Use of similar goods (parts) on the market causes earlier damage or worsening of performance.)

HOW TO READ THIS PARTS CATALOG

- In the case where a Ref. No. given in the list does not agree with the corresponding Sketch No. in illustration (no suffix number as shown below), an illustration for such a New Part has been omitted only in the case of a parts change for which Interchangeability Symbol N, R or K is given.

[Example]	Sketch No. in Illustration	Ref. No. in List	
	1	1	(Before the change)
		1 	(After the change)
	2	2	

- Indication and meaning of level


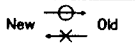
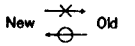
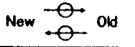
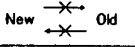
Level

-A number of dots indicated is called the level which refers to the assembly-component relation of an assembly part.
(* * *) refers to an assembly part.)
-Refers to a component included in an assembly part indicated by one dot (*).
-Refers to a component included in a complete part indicated by two dots (**).
(It indicates a sub-component of pertinent assembly part indicated by one dot (*).)

- Indication and meaning of interchangeability symbol

(Given under the column "I" next to the quantity column in the list)

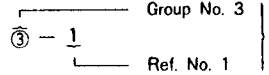
In the case where a parts change took place, one of the following interchangeability symbols is indicated for that part:

Symbol	Interchangeability	Contents note
N	New  Old	New Part is interchangeable for Old Part but not interchangeable conversely.
P	New  Old	Same as symbol N but supply of Old Part is suspended and New Part is sold in the future.
Q	New  Old	New Part is not interchangeable for Old Part but interchangeable conversely.
R	New  Old	New Part is interchangeable for Old Part and vice versa.
S	New  Old	New Part is not interchangeable for Old Part and vice versa.
W		Part newly added.
Z		Part discontinued.
F		Not interchangeable by single part but interchangeable by set of the related parts.
K		Changed only in quantity used.

- Remarks (column "R" given at the right end of the list)
9-1) A numerical or alphabetic character (symbol) may be indicated under the column "R".
9-2) A comment (remarks) for a part in question is given at the lower part of the list, following a symbol identical to the aftermentioned symbol when a symbol is indicated under the column "R".

- Virtual No. in illustration

A Sketch No. in illustration containing an encircled numeral indicates other related Group No.

[Example]  indicated.

- Change Effective Machine No.

When a part is changed, a Change Effective Machine No. of such a model for which a New Part is applied is indicated as follows:

[Example] Model columns A ~ F

(Model indication is given in two kinds, namely, 4-model and 6-model indications.) correspond to A ~ F in front of Change Effective Machine No..

4-model Indication

(A) =
(B) =
(C) =
(D) =

6-model Indication

(A) =	(D) =
(B) =	(E) =
(C) =	(F) =

[Example] A=F610001 B=F612001

Model column A indicates that a parts change is put into effect from Machine No. 610001 and on. And moreover Model column B indicates that a parts change is put into effect from Machine No. 612001 and on.

[Classification]

E Engine No.
F Machine Body No.
R Rotary Unit No. } indicated.

- Additional Group No. found in the Revised Edition

Kindly understand that a Group No. other than consecutive numbers has been entered in the case where the corresponding Group is added within the pertinent Section.

[Example]

Section

BODY SECTION

Group No. Group name

46. ENGINE FIXTURE & BATTERY

47. FRAME & HYDRAULIC PUMP

48. BEVEL GEAR CASE

49. TRANSM. CASE & RUNNING CLUTCH

50. CONTROL LEVERS

51. CRAWLER

64. ENGINE FIXTURE & BATTERY (Group added for the YSR1300-N)

65. CONTROL LEVERS (Group added for the YSR1300-N)

SNOW REMOVAL SECTION

52. CHUTE

53. SNOW REMOVAL FRAME & BLOWER

Additional Groups are indicated.

Owing to the improvement of YANMAR Product involved or its parts, the contents of this Parts Catalog may be altered without prior notice to you.

SPECIFICATIONS

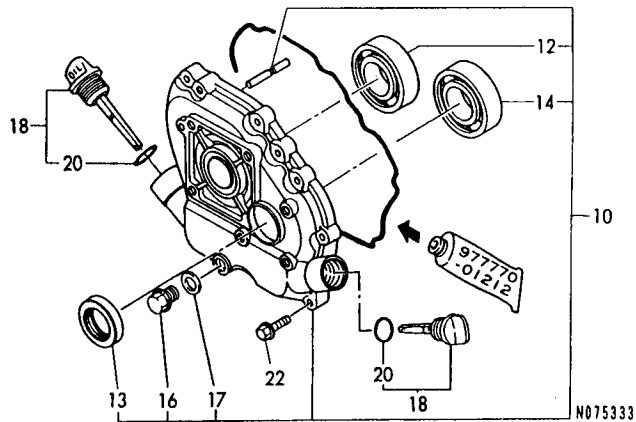
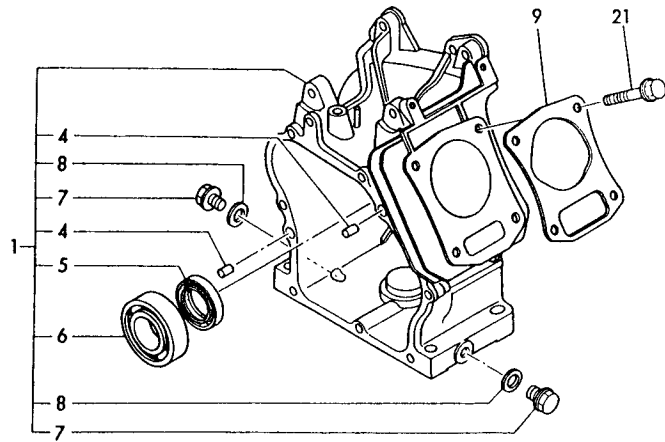
Model		MCG95		
Specifications		MCG95		
Item		MCG95		
Body	Overall length (mm)	1830		
	Overall width (mm)	660		
	Overall height (mm)	900		
	Weight (kg)	180		
	Tread (mm)	480		
Platform	Overall length X Overall width (mm)	980~1130X520~900		
Traveling unit	Min. radius of gyration (m)	Revolving on the spot		
	Max. carrying capacity (kg)	300		
	Speed (km/h)	Forward 1 st	1.3	
		Forward 2 nd	1.7	
		Forward 3 rd	3.5	
		Forward 4 th	4.5	
		Reverse 1 st	1.0	
Reverse 2 nd		2.6		
Transmission	Main clutch	Deadman(belt tension system)		
	Brake	Internal expanding type		
	Transmission system	All gear, side clutch & dog brake jointly used		
Loading engine		GA120E-SCKM		
Crawler	Width X Pitch X Rink (mm)	180X60X35(zigzag pattern)		
	Crawler bearing length (mm)	660		

NOTE : Given specifications may be altered for improvement, etc. without prior notice.

TABLE OF DETAILS OF SPECIFICATIONS

DIVISION	SPECIFICATIONS	Platform Type	Starter Type
		Manual Dump Platform	Recoil Starter
A	MCG95	○	○

1. CYLINDER BLOCK



N075333

1. CYLINDER BLOCK

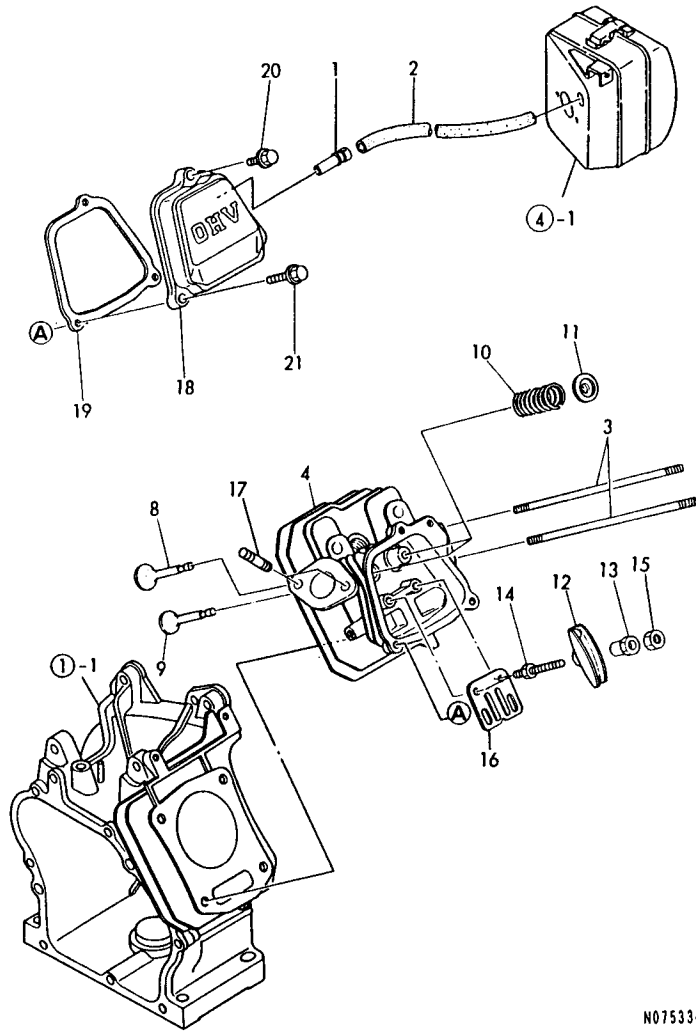
96.01.24

+-----+
| 1803 |
| (1802) |
+-----+
NPC-2631

(A)=GA120E-SCKM (D)=
(B)= (E)=
(C)= (F)=

REF. NO.	LEV. 0	PART NO.	DESCRIPTION	Q'TY						I	P/U	A	R
				(A)	(B)	(C)	(D)	(E)	(F)				
1	.	760590-01561	BLOCK ASSY, CYLINDER	1								1	
4	..	22312-080120	PARALLEL PIN 8X12	2								10	
I 4-1	..	114270-01600	PARALLEL PIN 8X12	2								R 1	
(A=EA3161)													
5	..	160610-02220	SEAL, OIL	1								1	
6	..	24101-062040	BALL BEARING	1								1	
7	..	160610-01690	PLUG, DRAIN	2								5	
8	..	104200-59170	GASKET 12	2								1	
9	.	160590-01330	GASKET, CYL. HEAD	1								1	
10	.	760590-01500	COVER ASSY, SIDE	1								1	
12	..	24101-062040	BALL BEARING	1								1	
13	..	160610-02220	SEAL, OIL	1								1	
14	..	24101-062040	BALL BEARING	1								1	
16	..	160610-01690	PLUG, DRAIN	1								1	
17	..	104200-59170	GASKET 12	1								5	
18	.	160710-01760	CAP, W/LUB.OIL GAUGE	2								1	
20	..	24311-000180	O-RING 1A P-18.0	2								10	
21	.	160610-04201	BOLT M 8X 53	4								1	
22	.	26476-060252	BOLT M 6X 25, TAPPING	8								10	

2. CYLINDER HEAD & BONNET



N075334

2. CYLINDER HEAD & BONNET

96.01.24

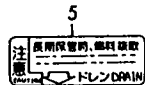
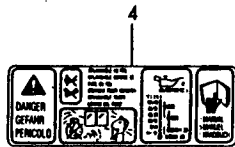
+-----+
 I 1804 I
 I (1802) I
 +-----+
 NPC-2631

(A)=6A120E-SCKM (D)=
 (B)= (E)=
 (C)= (F)=

REF. NO.	LEV. 0	PART NO.	DESCRIPTION	-----Q'TY-----						I	P/U	A	R
				(A)	(B)	(C)	(D)	(E)	(F)				
1	.	160690-03050	BREATHER	1								1	
2	.	160810-03180	PIPE, BREATHER	1								1	
3	.	160610-04570	BOLT M 6X 70	2								1	
4	.	160590-11010	HEAD ASSY, CYLINDER	1								1	
8	.	160590-11100	VALVE, INTAKE	1								1	
9	.	160590-11110	VALVE, EXHAUST	1								1	
10	.	160690-11120	SPRING, VALVE	2								1	
11	.	160690-11180	RETAINER, SPRING	2								1	
12	.	160690-11200	ARM, ROCKER	2								1	
13	.	160690-11220	PIVOT, ROCKER ARM	2								1	
14	.	160690-11270	BOLT	2								1	
14-1	.	160690-11271	BOLT	2							N	1	
(A=E49974)													
15	.	160690-11280	NUT M6X 0.5	2								1	
16	.	160690-11290	PLATE, GUIDE	1								1	
17	.	26216-080182	STUD M 8X 18 PLATED	2								10	
18	.	160690-11300	BONNET	1								1	
19	.	160690-11310	GASKET, BONNET	1								1	
20	.	26106-060202	BOLT M 6X 20 PLATED	1								10	
21	.	26106-060352	BOLT M 6X 35 PLATED	2								10	

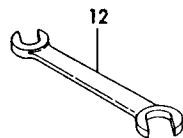
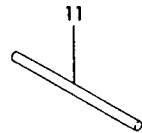
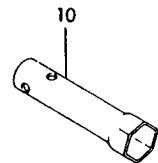
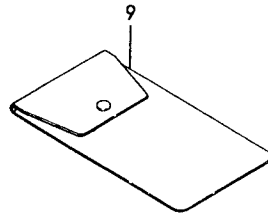
N075334

3. TOOL & LABEL



6
PULITE IL FILTRO DELL'ARIA OGNI 20-30 ORE DI LAVORO (OGNI 10 ORE IN AMBIENTE DI LAVORO POLVEROSO)
DOPO AVERE LAVATO CON KEROSINE L'ELEMENTO FILTRANTE IN SPUGNA, STRIZZATELO E LASCIATELO ASCIUGARE COMPLETAMENTE.
UNA VOLTA ASCIUTTO, IMBETTELLO CON OLIO MOTORE E STRIZZATELO BENE PRIMA DI REINSTALLARLO.

7
NETTOYER FILTRE A AIR PAR DE 20 A 30 HEURES. (NETTOYER PER 10 HEURES A ENDROIT POUSSIEREUX)
NETTOYER EPONGE AVEC HUILE D'ECLAIRAGE OU ESSENCE ET SECHER BIEN APRES PRESSER. ENSUITE PLONGER DANS ESSENCE POUR ENLEVER HUILE EXCEDENT EN BIEN PRESSANT.



8
Clean out air filter every 20-30 hours. (every 10 hours in dusty areas)
After washing the sponge with kerosine, thoroughly wring out and let dry.
After drying, soak in new engine oil, wring well and use.

N075335

↑-----↑
1 (1) REF.NO.5 YANMAR LIGHT YELLOW,
1 5-1 YANMAR NEW RED.

3. TOOL & LABEL

96.01.24

↑-----↑
1 1B05 1
1 (1B02) 1
↑-----↑
NPC-2631

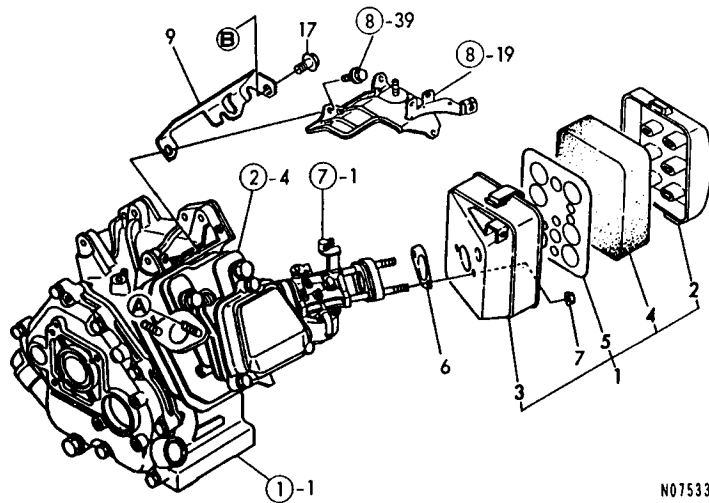
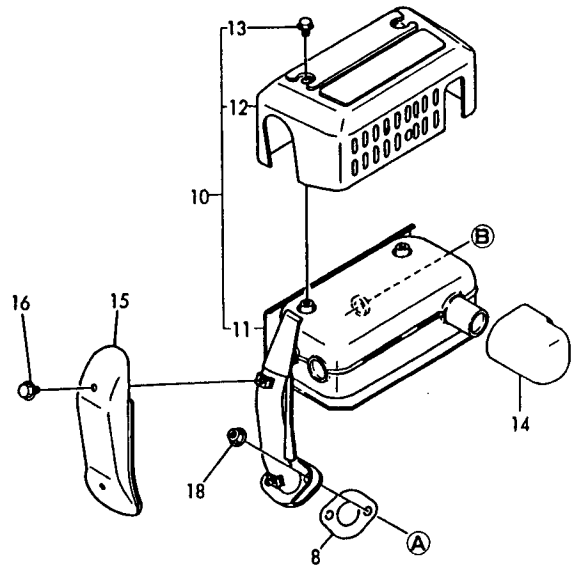
(A)=GA120E-SCKM (D)=
(B)= (E)=
(C)= (F)=

REF. NO.	LEV. 0	PART NO.	DESCRIPTION	-----Q'TY-----						I	P	U	A	R
				(A)	(B)	(C)	(D)	(E)	(F)					
2	.	160798-07100	LABEL, FINGER START	1										1
4	.	160708-07260	MARK, CAUTION	1										1
5	.	160520-07271	LABEL, DRAIN	1										1
5-1	.	160520-07272 (A=E57188)	LABEL, DRAIN	1							S	1	(1)	
6	.	160664-07360	LABEL, AIR CLEAWER	1										1
7	.	160662-07370	LABEL, AIR CLEANER	1										1
8	.	160664-07370	LABEL, AIR CLEANER	1										1
9	.	160110-92610	BAG, TOOL	1										1
10	.	160120-92700	SPANNER, BOX	1										1
11	.	160110-92710	BAR	1										1
12	.	28110-100120	WRENCH 10X12	1										1

----- REMARKS -----
 (1) エアフィルタ NO.5 ヤンマー-ライト イエロー,
 5-1 ヤンマー-ニュー レッド。
 (1) REF.NO.5 YANMAR LIGHT YELLOW,
 1 5-1 YANMAR NEW RED.

N075335

4. AIR CLEANER & MUFFLER



N075336

4. AIR CLEANER & MUFFLER

96.01.24

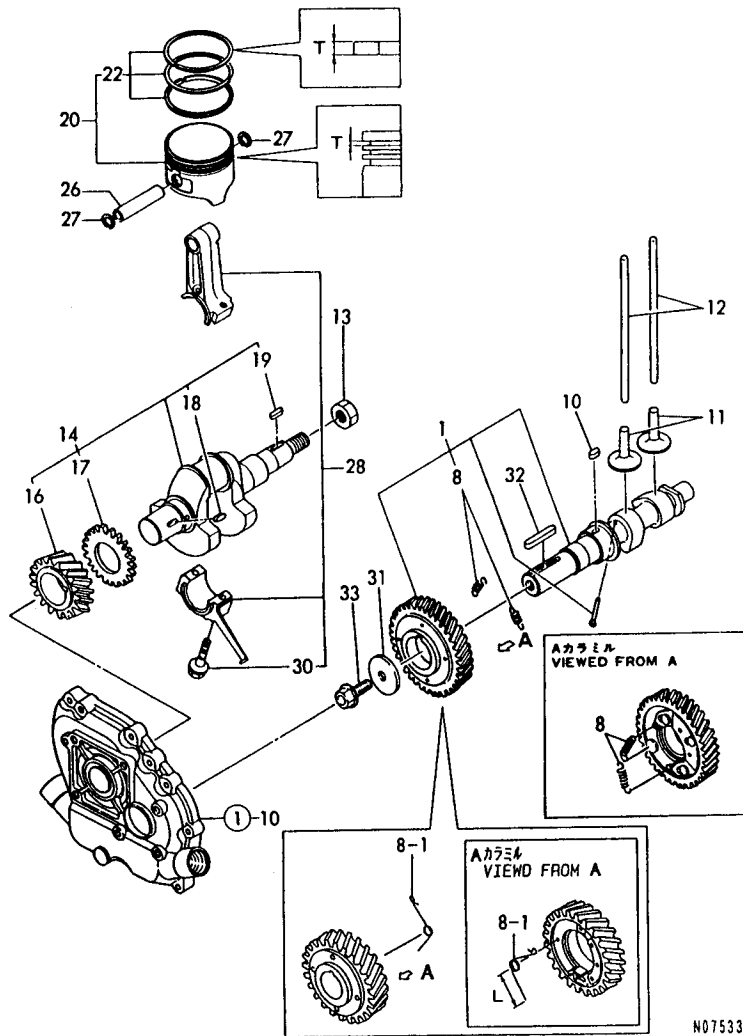
↑-----↑
 | 1806 |
 | (1802) |
 ↑-----↑
 NPC-2631

(A)=GA120E-SCKM (D)=
 (B)= (E)=
 (C)= (F)=

REF. NO.	LEV. 0	PART NO.	DESCRIPTION	-----Q'TY-----						I P / U A R
				(A)	(B)	(C)	(D)	(E)	(F)	
1	.	160690-12600	CLEANER ASSY, AIR	1						1
2	..	160690-12510	CAP, AIR CLEANER	1						1
3	..	160690-12530	BODY, AIR CLEANER	1						1
4	..	160760-12530	ELEMENT	1						1
5	..	160493-12550	HOLDER, ELEMENT	1						1
6	.	160610-56150	GASKET, CARBURETOR	1						1
7	.	26366-060002	NUT M 6	2						10
8	.	160690-13200	GASKET, MUFFLER	1						1
9	.	160690-13550	BRACKET, MUFFLER	1						1
10	.	160693-13600	MUFFLER W/COVER	1						1
11	..	160693-13510	MUFFLER	1						1
12	..	160693-13540	COVER, MUFFLER	1						1
13	..	26106-060082	BOLT M 6X 8 PLATED	3						10
14	.	160321-13770	EXTENSION, MUFFLER	1						1
15	.	160690-13900	COVER, ELBOW	1						1
16	.	114252-13950	BOLT M 6X 8 PLATED	2						1
17	.	26106-080142	BOLT M 8X 14 PLATED	1						10
18	.	26366-080002	NUT M 8	2						10

N075336

5. CRANKSHAFT, PISTON & CAMSHAFT



N075337

(1) L=REF.NO.8-1 33M/M, 8-2 30M/M.

(3) T= REF.NO.22 1.2M/M, 22-1 1.5M/M.

5. CRANKSHAFT, PISTON & CAMSHAFT

96.01.24

+-----+
| 1807 |
| (1802) |
+-----+
NPC-2631

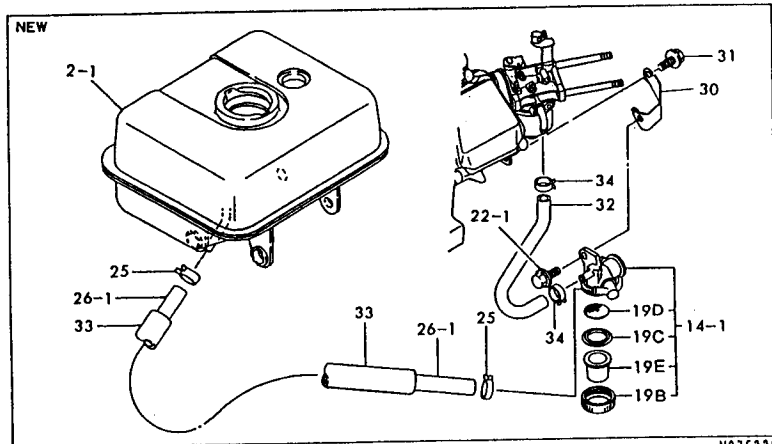
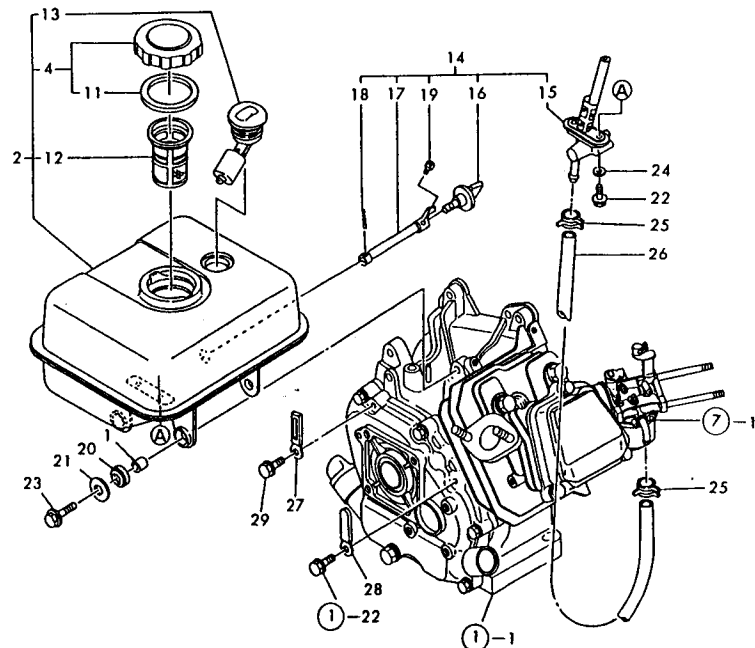
(A)=GA120E-SCKM (D)=
(B)= (E)=
(C)= (F)=

REF. NO.	LEV. 0	PART NO.	DESCRIPTION	-----Q'TY-----						I	P	U	A	R
				(A)	(B)	(C)	(D)	(E)	(F)					
1	..	160590-14051	CAMSHAFT ASSY	1										1
8	..	160690-14560	SPRING, DECOMP.	2										1
8-1	..	160690-14570	SPRING, DECOMP.	1							S			1 (1)
(A=E48124)														
8-2	..	160590-14570	SPRING, DECOMP.	1							S			1 (1)
(A=E54836)														
10	.	22512-040120	KEY 4X 12	1										1
11	.	160490-14200	TAPPET	2										1
12	.	160590-14400	ROD, PUSH	2										1
13	.	160610-04910	NUT M14	1										1
14	.	760590-21700	CRANKSHAFT ASSY	1										1
16	..	160590-21200	GEAR, CRANKSHAFT	1										1
17	..	160590-21210	GEAR, IDLE	1										1
18	..	160610-21290	KEY 4X 10	1										1
19	..	22512-040160	KEY 4X 16	1										1
20	.	160590-22010	PISTON W/RINGS	1										1
20-1	..	160590-22011	PISTON W/RINGS	1							S			1 (2)
(A=E43119)														
22	..	760590-22500	RING SET, PISTON	1										1 (3)
22-1	..	760590-22501	RING SET, PISTON	1							S			1 (3)
(A=E43119)														
26	.	160590-22300	PIN, PISTON	1										1
27	.	22252-000130	CIRCLIP 13	2										10
28	.	760590-23700	ROD ASSY, CONNECTING	1										1
30	..	160710-23201	BOLT, ROD	2										2
I 30-1	..	26106-060302	BOLT M 6X 30 PLATED	2								R		10
(A=EA3161)														
31	.	160310-14550	WASHER	1										1
32	.	22512-050300	KEY 5X 30	1										1
33	.	26106-080202	BOLT M 8X 20 PLATED	1										10

----- REMARKS -----
 (1) L=REF.NO.8-1 33M/M, 8-2 30M/M. (1) L=REF.NO.8-1 33M/M, 8-2 30M/M.
 (2) 番号NO.20 と 20-1 の 違いは 22,22-1
 の 仕様違いによる。
 (3) T= REF.NO.22 1.2M/M, 22-1 1.5M/M. (3) T= REF.NO.22 1.2M/M, 22-1 1.5M/M.

N075337

6. FUEL OIL TANK & FUEL OIL LINE



N075338

-----+
 I 1808 I
 I (1802) I
 -----+
 NPC-2631

6. FUEL OIL TANK & FUEL OIL LINE

96.01.24

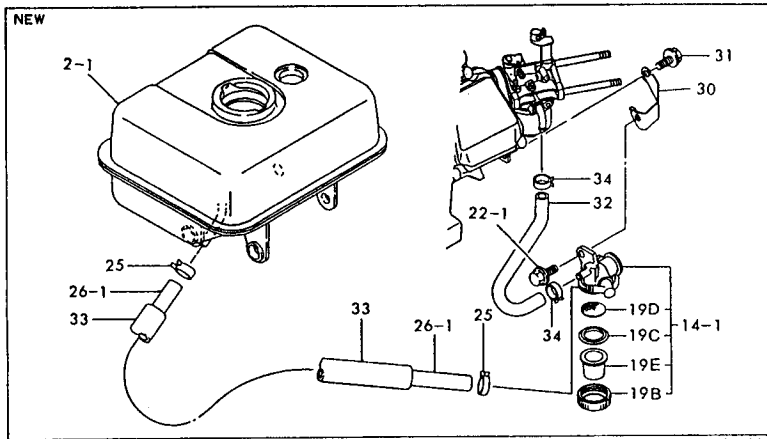
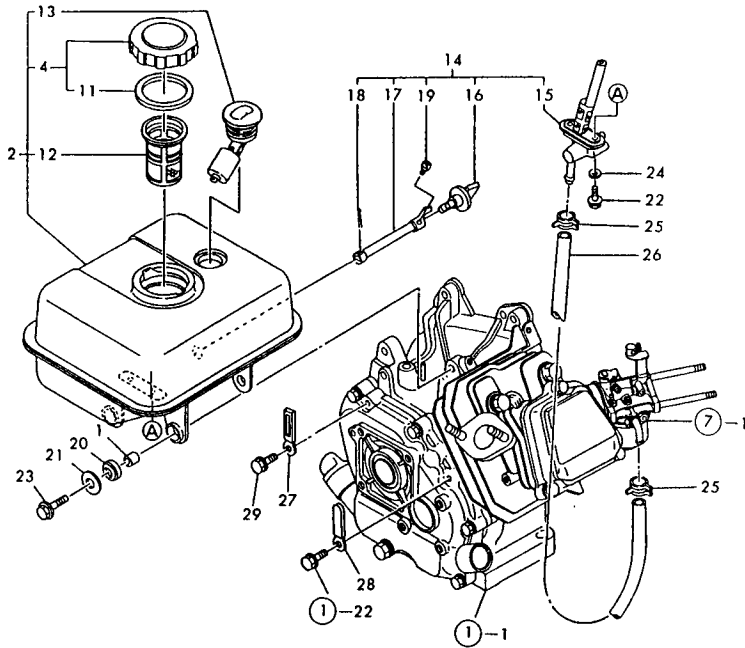
(A)=GA120E-SCKM (D)=
 (B)= (E)=
 (C)= (F)=

REF. NO.	LEV. 0	PART NO.	DESCRIPTION	-----Q'TY-----						I P/U A R
				(A)	(B)	(C)	(D)	(E)	(F)	
1	.	114250-45310	COLLAR	4						1
2	.	760590-55700	TANK, FUEL (RED) (50)	1						1
2-1	.	760590-55710	TANK ASSY, FUEL	1						S 1
(A=E68989)										
4	..	160710-55061	CAP ASSY, FUEL TANK	1						1
11	...	160393-55050	GASKET, TANK CAP	1						1
12	..	160610-55100	STRAINER	1						1
13	..	160762-55150	GAUGE, FUEL	1						1
14	.	160690-55300	COCK ASSY, FUEL	1						1
14-1	.	160692-55300	COCK ASSY, FUEL	1						S 1
14-2	.	160593-55300	COCK ASSY, FUEL	1						N 1
(A=E74343)										
15	..	160690-55310	COCK ASSY, FUEL	1						Z 1
(A=E68989)										
16	..	160690-55320	LEVER, FUEL COCK	1						Z 1
(A=E68989)										
17	..	160690-55330	SHIFT, FUEL COCK	1						Z 1
(A=E68989)										
18	..	22417-200200	COTTER PIN 2.DX20	1						Z 10
(A=E68989)										
19	..	26557-040102	SCREW M 4X 10	1						Z 10
(A=E68989)										
19B	..	160710-55360	RING	1						W 1
(A=E68989)										
19C	..	160710-55370	GASKET	1						W 1
(A=E68989)										
19D	..	160710-55382	FILTER	1						W 1
(A=E68989)										
19E	..	160710-55390	BOWL, STRAINER	1						W 1
(A=E68989)										
19E-1	..	160610-55390	CUP, COCK	1						N 1
(A=E74343)										
20	.	160690-55460	DAMPER, FUEL TANK	4						Z 1
I 21	.	160610-55470	PIECE	4						Z 1
(A=EA3161)										
22	.	26106-060142	BOLT M 6X 14 PLATED	2						10
22-1	.	26106-060102	BOLT M 6X 10 PLATED	1						S 10
(A=E68989)										
22-2	.	20106-060122	BOLT M 6X 12 PLATED	1						N
(A=EXXX)										
23	.	26476-060252	BOLT M 6X 25, TAPPING	4						10
I 23-1	.	114370-45350	BOLT, FAN CASE	4						N 1
(A=EA3161)										
24	.	43400-500400	SEAL WASHER 6	2						Z 1
(A=E68989)										
25	.	106990-44660	BAND, HOSE	2						1
26	.	160690-59360	PIPE, FUEL	1						1
26-1	.	160735-59350	F. O. PIPE (A)	1						S 1
(A=E68989)										
27	.	160260-78700	CLAMP, CORD	1						Z 1
(A=E74343)										
28	.	160710-78710	CLAMP, CORD	1						1

** CONTINUE **

N075338

6. FUEL OIL TANK & FUEL OIL LINE



N075338

6. FUEL OIL TANK & FUEL OIL LINE

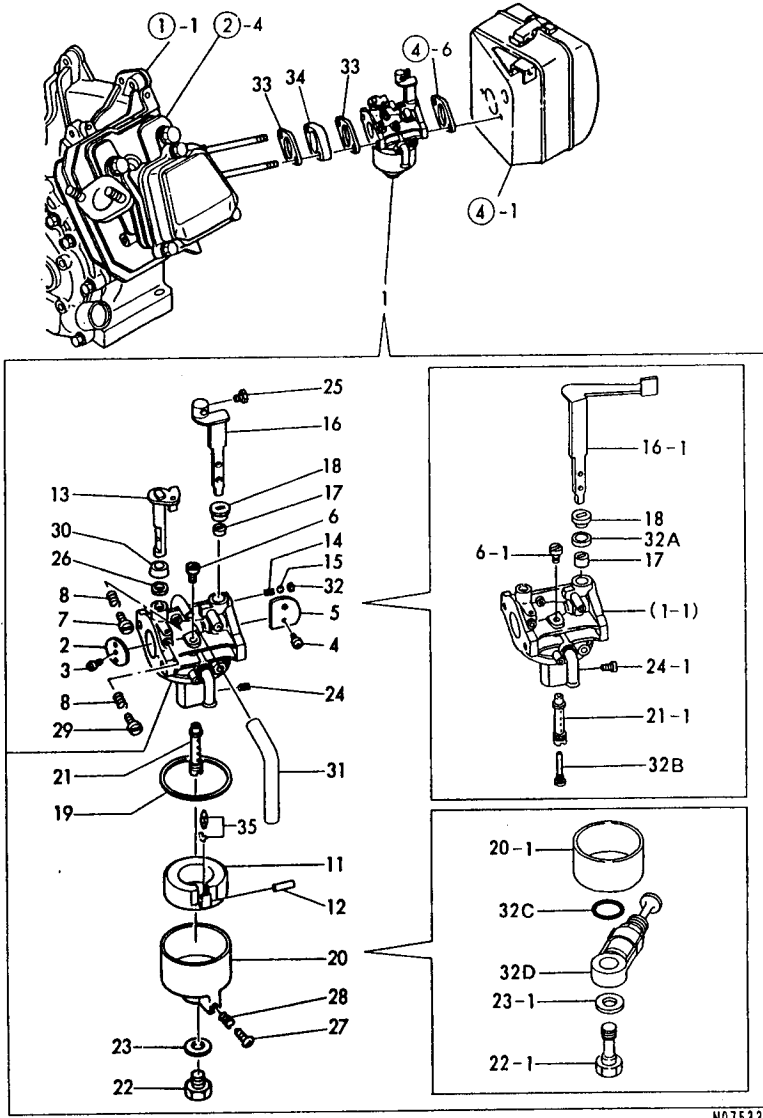
96.01.24

↑-----↑
 | 1809 |
 | (1802) |
 ↓-----↓
 NPC-2631

(A)=GA120E-SCKM (D)=
 (B)= (E)=
 (C)= (F)=

REF. NO.	LEV. 0	PART NO.	DESCRIPTION	Q'TY						I	P/U	A	R
				(A)	(B)	(C)	(D)	(E)	(F)				
29	.	26476-060142 (A=E74343)	BOLT M 6X 14,TAPPING	1							Z	10	
30	.	160593-55360 (A=E68989)	STAY, FUEL COCK	1							W	1	
31	.	26476-060142 (A=E68989)	BOLT M 6X 14,TAPPING	1							W	10	
32	.	160735-59360 (A=E68989)	PIPE, FUEL	1							W	1	
33	.	160690-59400 (A=E68989)	PROTECTOR, PIPE	1							W	1	
34	.	124060-77680 (A=E68989)	CLAMP 10	2							W	5	

7. CARBURETOR



N075339

 (1) REF.NO.5 YANMAR LIGHT YELLOW,
 (2) 5-1 YANMAR NEW RED.

7. CARBURETOR

96.01.24

-----+
 | 1B10 |
 | (1B02) |
 +-----+
 NPC-2631

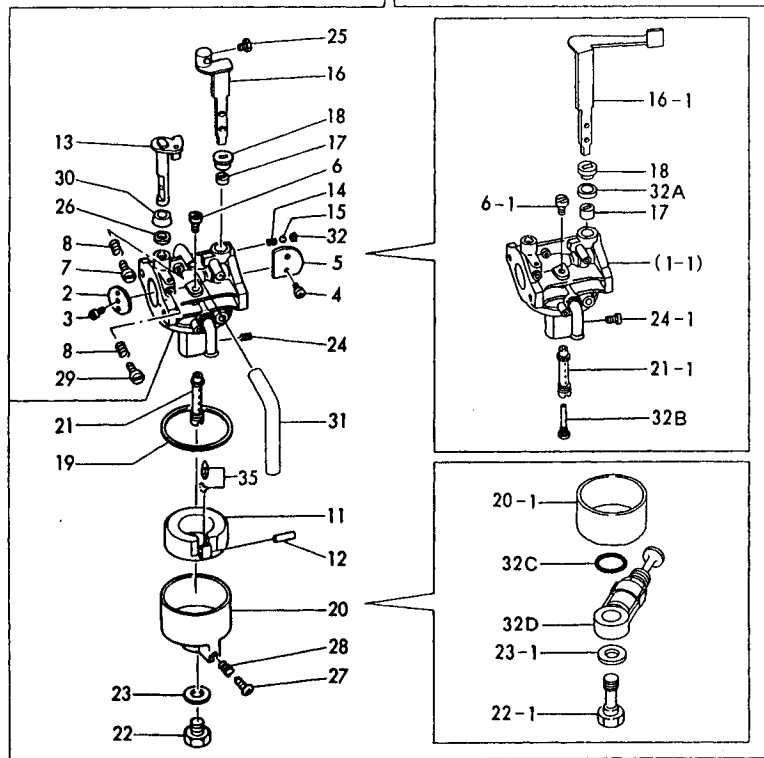
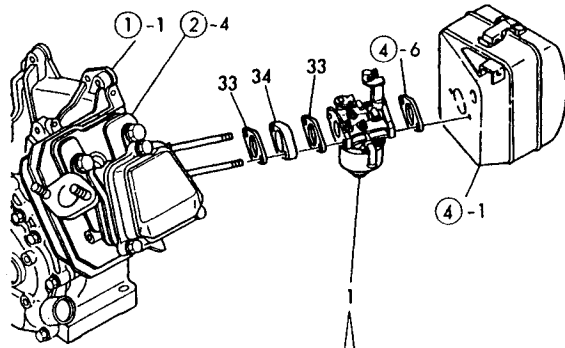
(A)=GA120E-SCKM (D)=
 (B)= (E)=
 (C)= (F)=

REF. NO.	LEV. 0	PART NO.	DESCRIPTION	-----Q'TY-----						I P U A R
				(A)	(B)	(C)	(D)	(E)	(F)	
1	..	160590-56020	CARBURETOR ASSY	1						1
1- 1	..	160591-56030 (A=E68989)	CARBURETOR ASSY	1						N 1
2	..	160592-56540	VALVE, THROTTLE	1						1
3	..	160810-56670	SCREW	1						1
4	..	160903-56670	SCREW	2						1
5	..	160590-56530	VALVE, CHOKE	1						1
6	..	160610-56740	JET, PILOT	1						1
6- 1	..	160590-56740 (A=E68989)	JET, PILOT	1						S 1
7	..	160692-56710	SCREW	1						1
8	..	181230-56380	SPRING	2						1
11	..	160769-56620	FLOAT ASSY	1						1
12	..	160610-56630	PIN, FLOAT	1						1
13	..	160692-56640	SHAFT, THROTTLE	1						1
14	..	160310-56980	SPRING, CHOKE	1						1
15	..	160310-56990	BALL, STEEL	1						1
16	..	160590-56650	LEVER, CHOKE	1						1
16- 1	..	160690-56650 (A=E68989)	LEVER, CHOKE	1						S 1
17	..	160810-56580	RING, CHOKE SHAFT	1						1
18	..	160810-56590	RING, CHOKE LEVER	1						1
19	..	160610-56610	GASKET	1						1
20	..	160769-56640	BODY, FLOAT CHAMBER	1						1
20- 1	..	160592-56670 (A=E68989)	BODY, FLOAT CHAMBER	1						S 1
21	..	160590-56670	NOZZLE, MAIN	1						1
21- 1	..	160590-56671 (A=E68989)	NOZZLE, MAIN	1						S 1
22	..	160769-56660	BOLT	1						1
22- 1	..	160692-56730 (A=E68989)	BOLT	1						S 1
23	..	160610-56611	GASKET	1						1
23- 1	..	160792-56600 (A=E68989)	GASKET	1						S 1
24	..	160590-56770	JET, ENRICHMENT	1						1
24- 1	..	160590-56771 (A=E68989)	MAIN JET	1						S 1
25	..	26117-040088	BOLT M 4X 8 PLATED	1						Z 10
		(A=E68989)								
26	..	160640-56850	SEAL	1						1
27	..	160610-56900	SCREW	1						Z 1
		(A=E68989)								
28	..	181230-56380 (A=E68989)	SPRING	1						Z 1
29	..	160667-56750	SCREW, ADJUSTING	1						1
30	..	160702-56720	RING	1						1
31	..	160692-56770	HOSE	1						1
32	..	160692-56700	SEAL, RUBBER	1						1
32A	..	160692-56800 (A=E68989)	SEAL, RUBBER	1						W 1
32B	..	160590-56800 (A=E68989)	NOZZLE	1						W 1

** CONTINUE **

N075339

7. CARBURETOR



N075339

↑-----↑
↑(1) ONLY FOR REPAIR.

7. CARBURETOR

96.01.24

↑-----↑
↑ 1B11 ↓
↑ (1B02) ↓
↑-----↑
NPC-2631

(A)=GA120E-SCKM (D)=
(B)= (E)=
(C)= (F)=

REF. NO.	LEV. 0	PART NO.	DESCRIPTION	-----Q'TY-----						I	P/U	A	R
				(A)	(B)	(C)	(D)	(E)	(F)				
32C	..	160692-56620	O-RING	1							W	1	
		(A=E68989)											
32D	..	160692-56761	BODY, COCK(A	1							W	1	
		(A=E68989)											
33	.	160610-56150	GASKET, CARBURETOR	2								1	
34	.	160690-56160	SPACER	1								1	
35	.	160692-56560	VALVE, NEEDLE(RUBBER	1								1 (1	

↑-----↑
↑(1) ONLY FOR REPAIR.

↑-----↑
↑(1) ONLY FOR REPAIR.

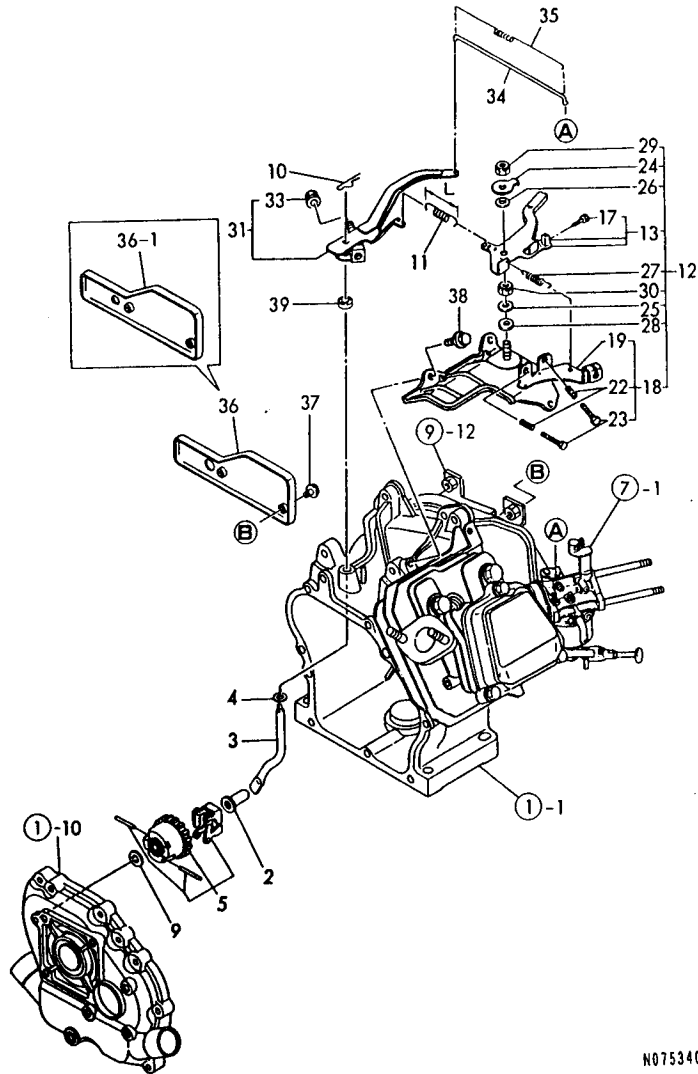
8. GOVERNOR & CONTROL DEVICE

96.01.24

↑
1812
↑
1802
↑
NPC-2631

8. GOVERNOR & CONTROL DEVICE

(A)=GA120E-SCKM (D)=
(B)= (E)=
(C)= (F)=



N075340

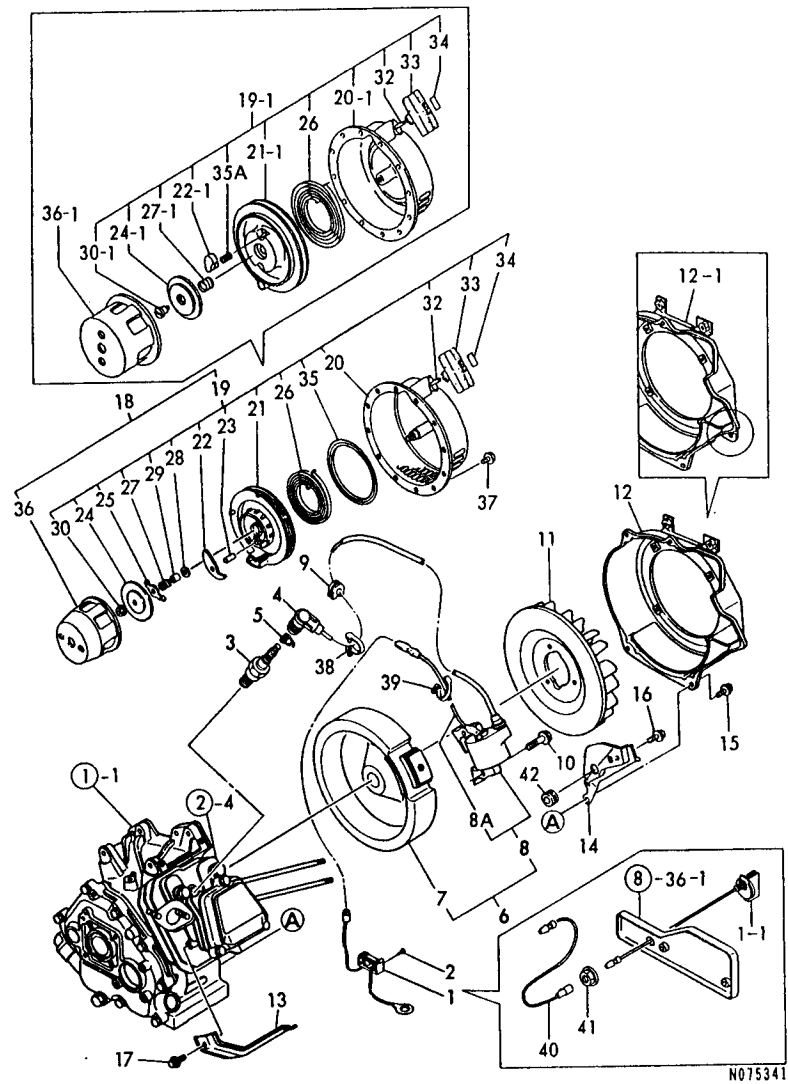
REF. NO.	LEV. 0	PART NO.	DESCRIPTION	Q'TY						I	P/U	A	R
				(A)	(B)	(C)	(D)	(E)	(F)				
2	.	160690-61300	SPINDLE, GOVERNOR	1								1	
3	.	160690-61310	SHAFT, GOV. LEVER	1								1	
4	.	160690-61450	WASHER	1								1	
5	.	160690-61600	GEAR ASSY, GOV.	1								1	
9	.	160120-76940	WASHER	1								1	
10	.	22372-080000	SNAP PIN (JASO 8)	1								10	
11	.	160590-66010	SPRING, GOVERNOR	1								1	(1
11-1	.	160594-66011	SPRING, GOVERNOR	1								1	(1
		(A=E60762)											
12	.	160690-66101	CONTROL ASSY	1								1	
13	..	160690-66081	LEVER ASSY, CONTROL	1								1	
17	...	26117-04D088	BOLT M 4X 8 PLATED	1								10	
18	..	160690-66111	BASE ASSY, CONTROL	1								1	
19	...	160690-66140	BASE, CONTROL	1								1	
19-1	...	160690-66141	BASE, CONTROL	1								N	1
		(A=E44134)											
19-2	...	160690-66142	BASE, CONTROL	1								R	1
		(A=E54836)											
19-3	...	160690-66143	BASE, CONTROL	1								N	1
		(A=E72143)											
22	...	160520-66291	SPRING	2								1	
23	...	26117-04D257	BOLT M 4X 25	2								10	
24	..	160690-66160	WASHER, STOP	1								1	
25	..	160664-66170	WASHER, NYLON	1								1	
26	..	160664-66180	SPRING, PLATE	1								1	
27	..	160664-66220	SPRING, RETURN	1								1	
28	..	22137-060000	WASHER 6, POLISHED	1								10	
29	..	26347-060002	U-NUT M 6	1								10	
30	..	26757-060002	NUT M 6	1								10	
31	.	160690-66180	LEVER ASSY, GOVERNOR	1								1	
33	..	26366-060002	NUT M 6	1								10	
34	.	160690-66200	LINK, THROTTLE	1								1	
35	.	160690-66210	SPRING, TENSION	1								1	
36	.	160690-66300	PANEL	1								S	1
36-1	.	160690-66310	PANEL	1								S	1
		(A=E74343)											
37	.	26106-06D102	BOLT M 6X 10 PLATED	2								S	10
37-1	.	26106-06D162	BOLT M 6X 16 PLATED	2								S	10
		(A=E82047)											
38	.	26476-06D142	BOLT M 6X 14, TAPPING	3								10	
39	.	114770-61600	SEAL, OIL	1								W	1
		(A=E48124)											

↑
1 (1) L = REF.NO.11 50.5M/M, 11-1 49.5M/M
↓

----- REMARKS -----
↑
(1) L = REF.NO.11 50.5M/M, 11-1 49.5M/M. (1) L = REF.NO.11 50.5M/M, 11-1 49.5M/M
↓

N075340

9. FLY, MAGNET & STARTING DEVICE



+-----+
 | 1813 |
 | 1802 |
 +-----+
 NPC-2631

9. FLY, MAGNET & STARTING DEVICE

96.01.24

(A)=6A120E-SCKM (D)=
 (B)= (E)=
 (C)= (F)=

REF. NO.	LEV. 0	PART NO.	DESCRIPTION	-----Q'TY-----						P	U	A	R
				(A)	(B)	(C)	(D)	(E)	(F)				
1	.	160690-77250	SWITCH, STOP	1								1	
1- 1	.	160611-77250 (A=E68989)	SWITCH, STOP	1								S 1	
2	.	22857-200100 (A=E68989)	SCREW 2.0X10, TAPPING	2								Z 10	
3	.	160690-78010	PLUG, SPARK	1								1	
3- 1	.	160690-78020 (A=E60762)	PLUG, SPARK	1								N 1	
4	.	160700-78040	CAP, PLUG	1								1	
5	.	160700-78050	TERMINAL, PLUG	1								1	
6	.	160590-78091	MAGNET ASSY, FLYWHEEL	1								1	
7	..	160590-78540	ROTOR	1								1	
8	..	160590-78532	IGNITER	1								1	
8A	...	160690-78230 (A=EXXX)	CORD, STOP	1								W 1	
9	.	160700-78720	GROMMET	1								1	
10	.	26476-060302	BOLT M 6X 30, TAPPING	2								10	
11	.	160690-45011	FAN, COOLING	1								1	
11- 1	.	160699-45010 (A=E82047)	FAN, COOLING	1								R 1	
12	.	160590-45120	CASE, FAN (WHITE) (14)	1								1	
12- 1	.	160590-45130 (A=E68989)	CASE, FAN (WHITE) (14)	1								S 1	
13	.	160690-45200	COVER, CYLINDER	1								1	
14	.	160590-45211	COVER, REAR	1								1	
15	.	26476-060142	BOLT M 6X 14, TAPPING	4								10	
16	.	26476-060142	BOLT M 6X 14, TAPPING	1								10	
17	.	26476-060142	BOLT M 6X 14, TAPPING	1								10	
18	.	160690-76050	STARTER ASSY, RECOIL	1								1	
I 18- 1	.	160690-76051 (A=EA3161)	STARTER ASSY, RECOIL	1								N 1	
19	..	160690-76250	STARTER ASSY, RECOIL	1								1	
I 19- 1	..	160690-76251 (A=EA3161)	RECOIL ASSY	1								S 1	
20	...	160690-76510	CASE, STARTER	1								1	
I 20- 1	...	160690-76511 (A=EA3161)	CASE COMP., STARTER	1								S 1	
21	...	160690-76520	REEL	1								1	
I 21- 1	...	160690-76521 (A=EA3161)	REEL	1								S 1	
22	...	160690-76800	RATCHET	1								1	
I 22- 1	...	160690-76801 (A=EA3161)	RATCHET	2								S 1	
I 23	...	160690-76810 (A=EA3161)	PIN, RATCHET	1								Z 1	
24	...	160690-76580	PLATE, FRICTION	1								1	
I 24- 1	...	160690-76531 (A=EA3161)	GUIDE, RATCHET	1								S 1	
I 25	...	160690-76530 (A=EA3161)	GUIDE, RATCHET	1								Z 1	
26	...	160690-76540	SPRING, SPIRAL	1								1	
27	...	160690-76560	SPRING, FRICTION	1								1	
I 27- 1	...	160690-76561 (A=EA3161)	SPRING, FRICTION	1								S 1	

** CONTINUE **

N075341

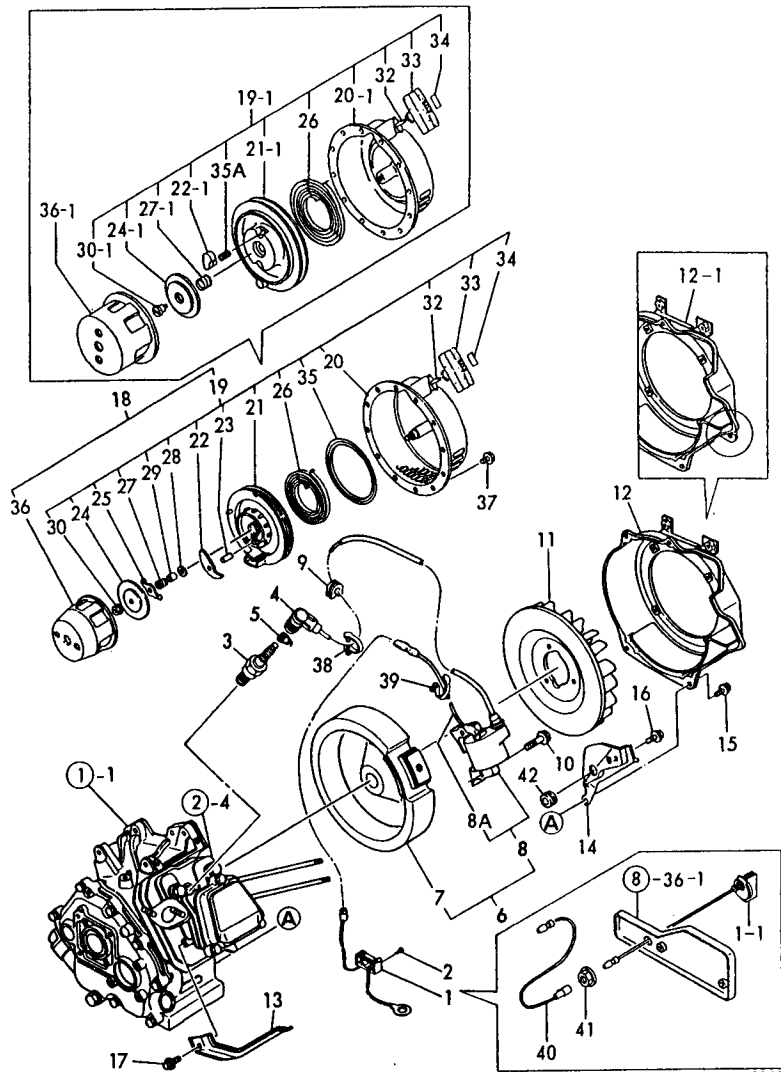
9. FLY, MAGNET & STARTING DEVICE

+-----+
 I 1814 I
 I (1802) I
 +-----+
 NPC-2631

9. FLY, MAGNET & STARTING DEVICE

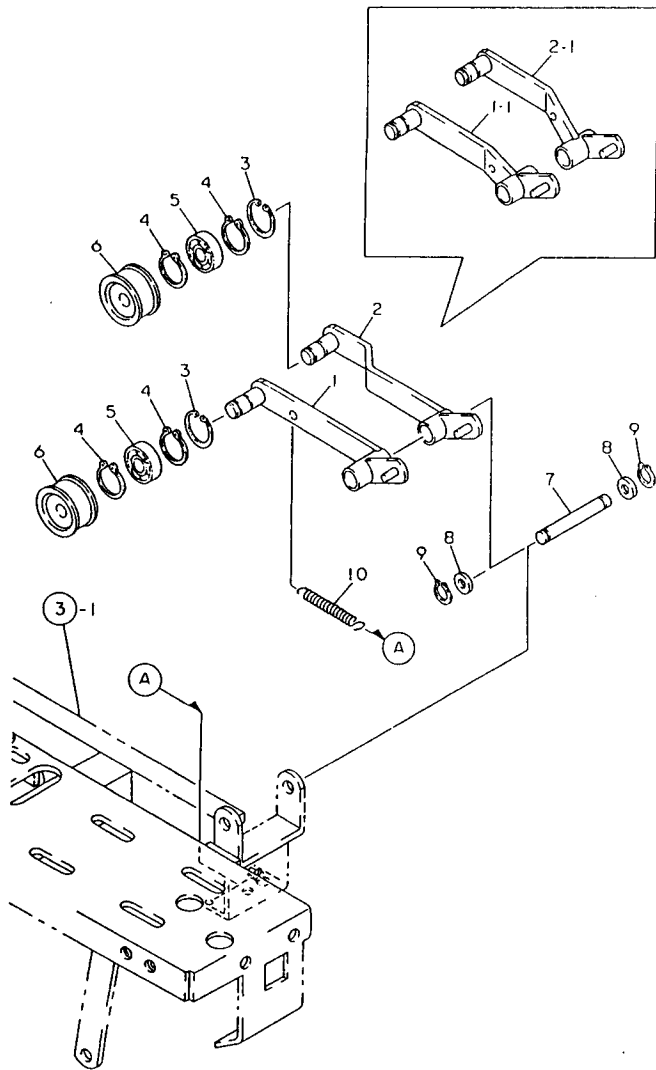
96.01.24

(A)=GA120E-SCKM (D)=
 (B)= (E)=
 (C)= (F)=



REF. NO.	LEV. 0	PART NO.	DESCRIPTION	-----Q'ITY-----						I	P/U	A	R
				(A)	(B)	(C)	(D)	(E)	(F)				
I 28	...	160690-76550 (A=EA3161)	WASHER, THRUST	1							Z	1	
I 29	...	160690-76820 (A=EA3161)	SHAFT	1							Z	1	
I 30	...	26367-060002	NUT M 6	1								30	
I 30-1	...	160690-76580 (A=EA3161)	PLATE, FRICTION	1							S	1	
I 32	...	160690-76630	ROPE, STARTER	1								1	
I 33	...	160690-76620	KNOB, STARTER	1								1	
I 34	...	160690-76830	CAP, KNOB	1							Z	1	
I 35	...	160690-76840 (A=EA3161)	PLATE, SLIDE	1								1	
I 35A	...	160690-76570 (A=EA3161)	SPRING, RETURN	2							W	1	
I 36	..	160690-76590	PULLEY, STARTER	1								1	
I 36-1	..	160690-76591 (A=EA3161)	PULLEY, STARTER	1							S	1	
I 37	-	26106-060082	BOLT M 6X 8 PLATED	4								10	
I 38	-	29610-000650	CLAMP, SPEED 065	1								1	
I 39	-	29610-000950	CLAMP, SPEED 095	1								1	
I 40	-	160495-77260	CODE	1							W	1	
I 41	-	26366-080002 (A=E68989)	NUT M 8	1							W	10	
I 42	-	160341-01950 (A=EXXX)	PIPE	1							W	1	

1. TENSION ARM



N070138

+-----+
 I 1C03 I
 I 1C02 I
 +-----+
 NPC-2945

1. TENSION ARM

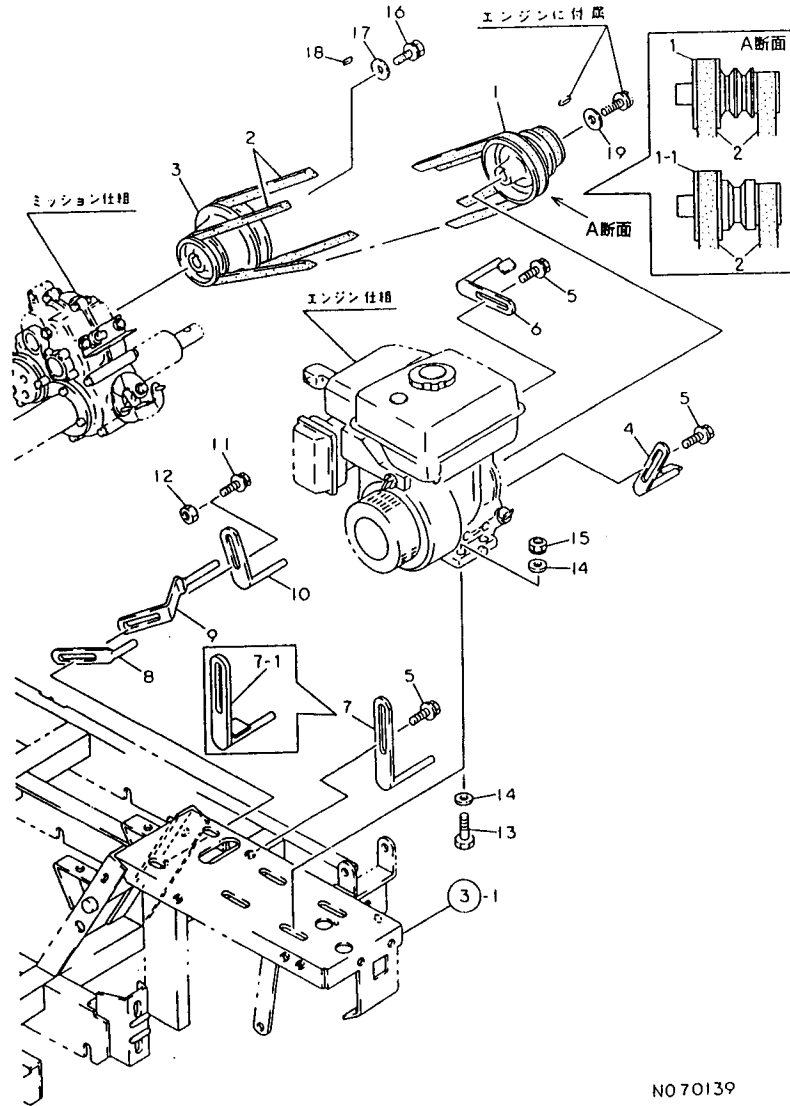
96.01.24

(A)=MCG95(-PQ(R (D)=
 (B)= (E)=
 (C)= (F)=

REF. NO.	LEV. 0	PART NO.	DESCRIPTION	-----Q'TY-----						I	P/U	A	R
				(A)	(B)	(C)	(D)	(E)	(F)				
1	.	1N3500-22030	ARM, TENSION	1								1	
1-1	.	1N3500-22031 (A=FO10099)	ARM, TENSION	1							S	1	
2	.	1N3500-22040	ARM B, TENSION	1								1	
2-1	.	1N3500-22041 (A=FO10099)	ARM B, TENSION	1							S	1	
3	.	22252-000350	CIRCLIP 35	2								10	
4	.	22242-000150	CIRCLIP 15	4								10	
5	.	24104-062024	BALL BEARING	2								1	
6	.	1N1430-22070	ROLLER, TENSION	2								1	
7	.	1N1460-41040	SHAFT	1								1	
8	.	22137-160000	WASHER 16, POLISHED	2								10	
9	.	22242-000160	CIRCLIP 16	2								10	
10	.	1N1190-45000	SPRING 11X72.5, TENS.	2								1	

N070138

2. PULLEY



NO70139

2. PULLEY

↑-----↑
 | 1C04 |
 | (1C02) |
 ↓-----↓
 NPC-2945

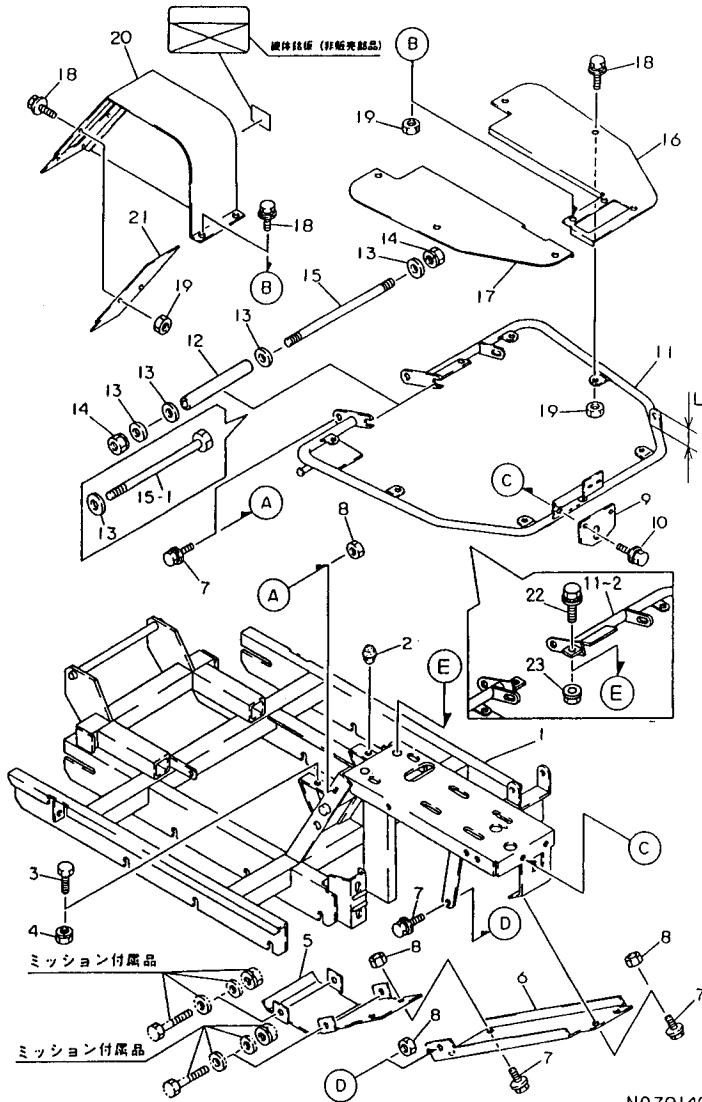
96.01.24

(A)=MCG95(-PR(R (D)=
 (B)= (E)=
 (C)= (F)=

REF. NO.	LEV. 0	PART NO.	DESCRIPTION	-----Q'TY-----						I	P	U	A	R
				(A)	(B)	(C)	(D)	(E)	(F)					
1	.	1N3500-21000	PULLEY,ENGINE	1										1
I 1-	1	1N3500-21001 (A=F016338)	PULLEY,ENGINE	1									S	
2	.	25123-003101	V-BELT	2										1
3	.	1N1297-21010	PULLEY,TRANSMISSION	1										1
4	.	1N3500-22000	GUIDE A 70X100,BELT	1										1
5	.	26018-080164	BOLT M 8X 16	3										20
6	.	1N3500-22010	GUIDE B 70X100,BELT	1										1
7	.	1N1272-22110	GUIDE 12X150,BELT	1										1
I 7-	1	1N3500-22090 (A=F014539)	BELT GUIDE	1									S	
8	.	1N1291-22020	GUARD 40,BELT	1										1
9	.	1N3500-22020	GUIDE C,BELT	1										1
10	.	1N1270-22080	GUIDE 80,BELT	1										1
11	.	26018-080254	BOLT M 8X 25	1										10
12	.	26367-080002	U-NUT M 8	1										10
13	.	26116-080452	BOLT M 8X 45 PLATED	4										10
14	.	22137-080000	WASHER 8, POLISHED	8										10
15	.	26051-080002	NUT M 8	4										20
16	.	26016-060164	BOLT 6X16 W/L.W.	1										30
17	.	1N1240-21040	WASHER	1										1
18	.	22550-050251	KEY 5X25	1										1
19	.	1N1185-42120	WASHER 9X25X3.2	1										1

NO70139

3. BODY FRAME



N070140

3. BODY FRAME

96.01.24

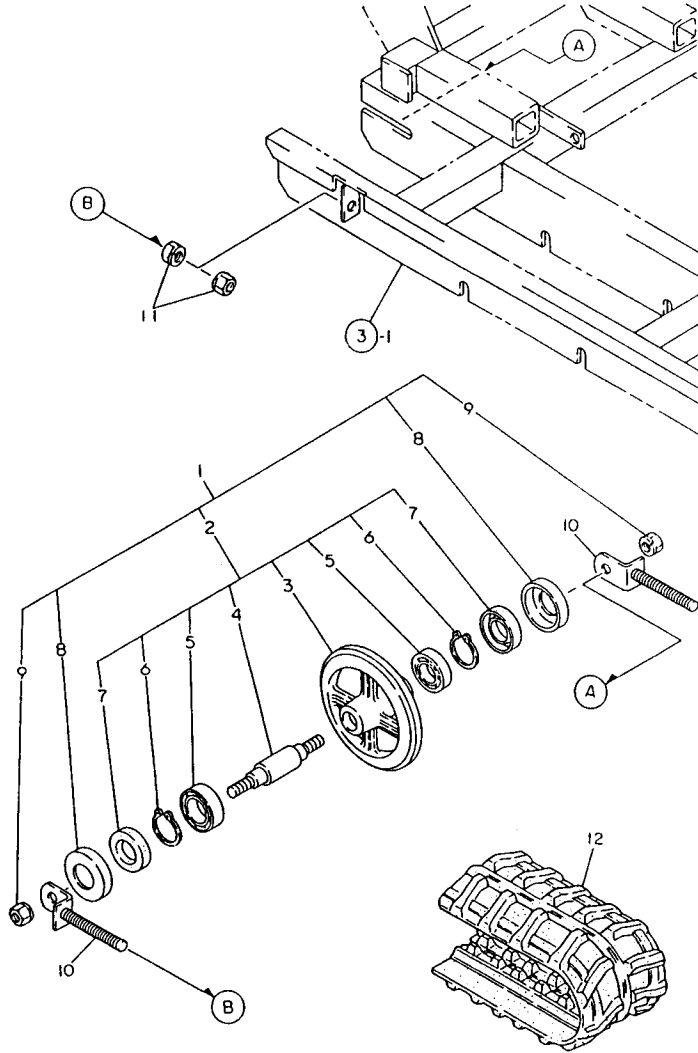
↑-----↑
1C06
↑(1C05)
↑-----↑
NPC-2945

(A)=MCG95(-PR(R (D)=
(B)= (E)=
(C)= (F)=

REF. NO.	LEV. 0	PART NO.	DESCRIPTION	-----Q'TY-----						I	P	U	A	R
				(A)	(B)	(C)	(D)	(E)	(F)					
1	.	1N3500-31000	FRAME,BODY	1										1
2	.	1N1101-44040	RUBBER, STOPPER	1										1
3	.	26117-100254	BOLT M10X25 PLATED	1										5
4	.	26051-100002	NUT M10	1										10
5	.	1N3500-58130	PROTECTOR	1										1
6	.	1N3500-58160	GUARD, UNDER	1										1
7	.	26018-080204	BOLT M 8X 20	7										20
8	.	26367-080002	U-NUT M 8	7										10
9	.	1N3500-41040	GUIDE B, CHANGE	1									Z	1
10	.	(A=F011099) 26018-080254 (A=F011099)	BOLT M 8X 25	2									Z	10
11	.	1N3500-54000	STEP	1										1
I 11- 1	.	1N3500-54001 (A=F011099)	STEP	1									S	
I 11- 2	.	1N3500-54002 (A=F018557)	STEP	1									S	
I 12	.	1N1550-54100	PIPE (C)	1									Z	1
I 13	.	(A=F018557) 22137-100000 (A=F018557)	WASHER 10,POLISHED	4									Z	10
14	.	26051-100002	NUT M10	2										10
14- 1	.	26051-100002 (A=F011099)	NUT M10	1									K	10
I 14- 2	.	26051-100002 (A=F018557)	NUT M10	1									Z	10
15	.	1N3500-54090	BOLT, STAY	1										1
15- 1	.	26117-101902 (A=F011099)	BOLT M10X190 PLATED	1									S	5
I 15- 2	.	26117-101902 (A=F018557)	BOLT M10X190 PLATED	1									Z	5
16	.	1N3500-54070	STEP L	1										1
17	.	1N3500-54080	STEP R	1										1
18	.	1N1291-58080	BOLT 6X16 W/P&SW.	12										1
19	.	26367-060002	NUT M 6	10										30
20	.	1N3500-58040	COVER,PULLEY	1										1
21	.	1N3500-58070	COVER D,PULLEY	1										1
I 22	.	26018-080204 (A=F018557)	BOLT M 8X 20	2									W	
I 23	.	26367-080002 (A=F018557)	U-NUT M 8	2									W	

N070140

4. IDLER



N070141

-----+
 | 1C08 |
 | 1C07 |
 +-----+
 NPC-2945

4. IDLER

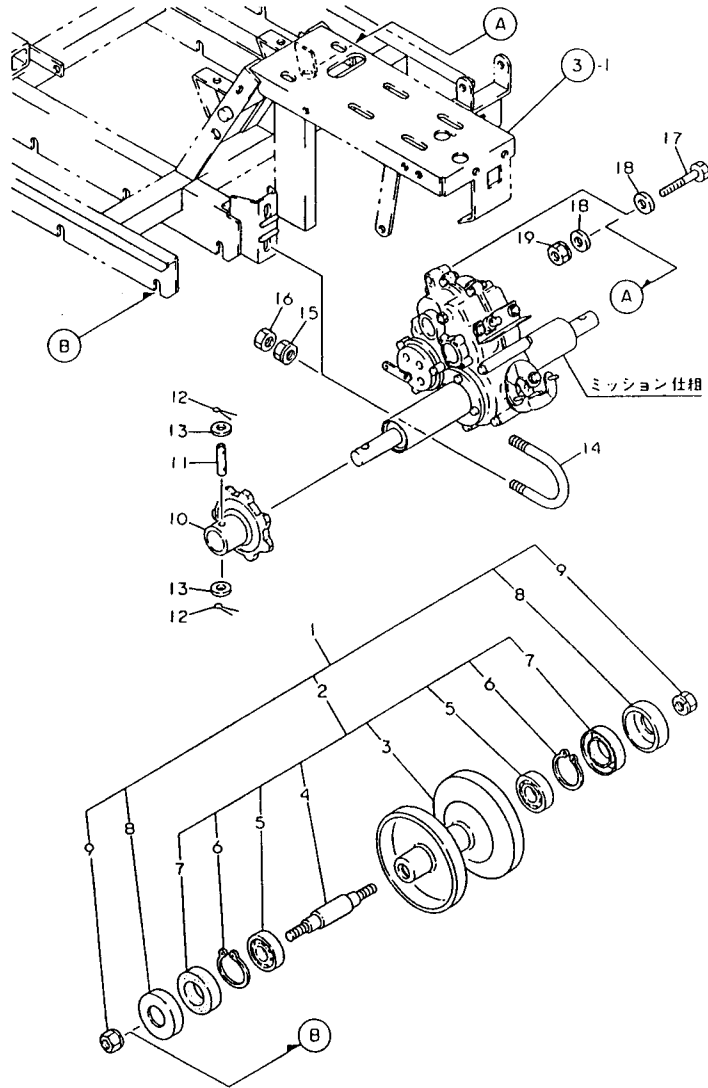
96.01.24

(A)=MCG95(-PQ(R (D)=
 (B)= (E)=
 (C)= (F)=

REF. NO.	LEV. 0	PART NO.	DESCRIPTION	-----Q'TY-----						I	P/U	A	R
				(A)	(B)	(C)	(D)	(E)	(F)				
1	.	7N1292-35010	FLOAT RING SET	2								1	
2	..	7N1292-35000	FLOAT RING ASSY.	2								1	
3	...	1N1292-35000	RING, FLOAT	2								1	
4	...	1N1292-35010	SHAFT	2								1	
5	...	24101-060034	BALL BEARING	4								1	
6	...	22242-000170	CIRCLIP 17	4								10	
7	...	24421-173508	SEAL TC17 35 08, OIL	4								1	
8	..	1N1091-36000	COVER, OIL SEAL	4								1	
9	..	26051-120002	NUT M12	4								10	
10	.	1N1291-37000	SCREW, ADJUST	4								1	
11	.	26051-120002	NUT M12	8								10	
12	.	1N3500-37000	CRAWLER 180X60X35, RB	2								1	

N070141

5. TRACK ROLLER



NO70142

5. TRACK ROLLER

96.01.24

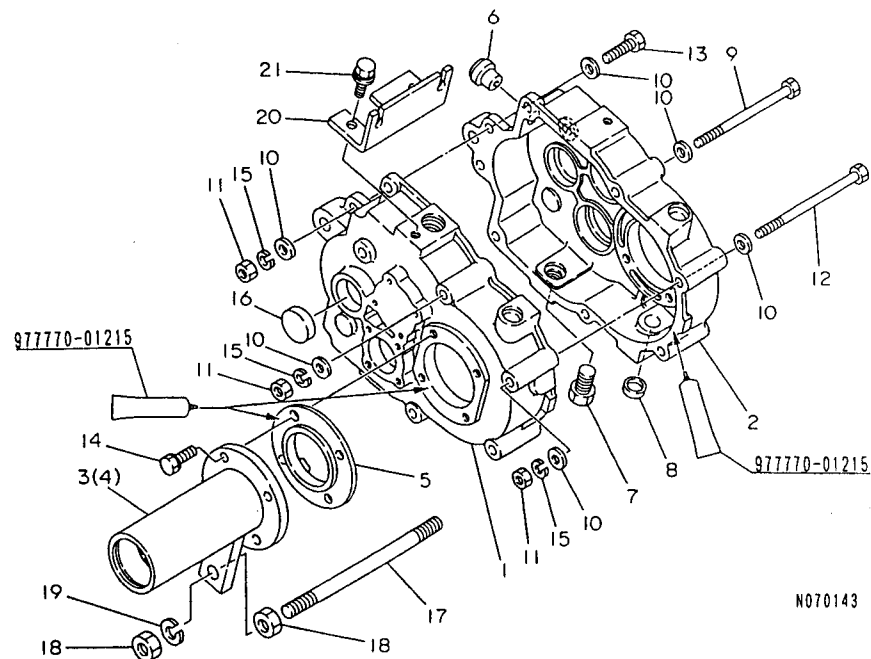
+-----+
| 1C09 |
| (1C07) |
+-----+
NPC-2945

(A)=MCG95(-PQ(R (D)=
(B)= (E)=
(C)= (F)=

REF. NO.	LEV. 0	PART NO.	DESCRIPTION	-----Q'TY-----						I	P/U	A	R
				(A)	(B)	(C)	(D)	(E)	(F)				
1	.	7N1292-36010	LWR.TRANK ROLLER SET	6								1	
2	..	7N1292-36000	LWR.TRANK ROLLER ASY	6								1	
3	...	1N1292-36000	ROLLER,LOWER TRANK	6								1	
4	...	1N1292-35010	SHAFT	6								1	
5	...	24101-060034	BALL BEARING	12								1	
6	...	22242-000170	CIRCLIP 17	12								10	
7	...	24421-173508	SEAL TC17 35 08, OIL	12								1	
8	..	1N1091-36000	COVER,OIL SEAL	12								1	
9	..	26051-120002	NUT M12	12								10	
10	.	1N1291-35000	SPROCKET	2								1	
11	.	1N1296-35000	PIN,SPROCKET	2								1	
12	.	22417-250250	COTTER PIN 2.5X25	4								10	
13	.	22137-100000	WASHER 10,POLISHED	4								10	
14	.	1N1210-35100	U-BOLT	2								1	
I 14- 1	.	1N3501-35030	U-BOLT	2							R	1	
(A=FD18307)													
15	.	26052-100002	NUT M10 W/SPRING	4								10	
16	.	26757-100002	LOCK NUT M10	4								10	
17	.	26117-100702	BOLT M10X 70 PLATED	1								10	
18	.	22137-100000	WASHER 10,POLISHED	2								10	
19	.	26051-100002	NUT M10	1								10	

NO70142

6. TRANSMISSION CASE



 *7N3500-20000 TRANSMISSION ASSY.
 (1) REF. NO.2 IS A DRAIN PLUG WITH
 HOLD OF M14 WHILE REF. NO.2-1 IS
 A DRAIN PLUG PT 1/4.

↑-----↑
 I 1C10 I
 I (1C07) I
 ↑-----↑
 NPC-2945

6. TRANSMISSION CASE

96.01.24
 (A)=MCG95(-PR(R (D)=
 (B)= (E)=
 (C)= (F)=

REF. NO.	LEV. 0	PART NO.	DESCRIPTION	-----Q'TY-----						I P/U A R
				(A)	(B)	(C)	(D)	(E)	(F)	
1	.	1N3500-24000	CASE L, TRANSMISSION	1						1
2	.	1N3500-24010	CASE R, TRANSMISSION	1						1
I 2-1	.	1N3500-24011	CASE R, TRANSMISSION	1					S	1 (1
(A=FO12411)										
3	.	1N1296-24001	HOLDER, AXLE	1						1
4	.	1N3500-24020	HOLDER, AXLE	1						1
5	.	1N1296-24013	PAWL, CLUTCH	2						1
6	.	1N1291-24030	PLUG, OIL	1						1
I 6-1	.	1N1291-24070	PLUG, HOLED OIL	1					S	1
(A=FO15946)										
7	.	1N1291-24040	PLUG M14, DRAIN	1						1
I 7-1	.	1N1530-24230	PLUG PT1/4	1					S	1
(A=FO12411)										
8	.	1N1430-24080	CAP, SEAL	2						1
9	.	26117-081102	BOLT M 8X110 PLATED	2						10
10	.	22137-080000	WASHER 8, POLISHED	16						10
11	.	26717-080002	NUT 8	8						10
12	.	26117-081202	BOLT M 8X120 PLATED	2						10
13	.	26117-080302	BOLT M 8X 30	4						10
14	.	26016-080204	BOLT M 8X 20	8						20
15	.	22217-080000	SPRING WASHER 8	8						10
16	.	1N1430-24000	PLUG, BLIND	1						1
17	.	1N1296-24020	SCREW M12X180	1						1
18	.	26717-120002	NUT M12	4						10
19	.	22217-120000	WASHER 12, SPRING	2						10
20	.	1N3500-24030	BRACKET, OUTER	1						1
21	.	26018-080164	BOLT M 8X 16	2						20

----- REMARKS -----
 *7N3500-20000 ミッション(シ) *7N3500-20000 TRANSMISSION ASSY.
 (1) ミッション NO.2 トリッパラカアカ M14, (1) REF. NO.2 IS A DRAIN PLUG WITH
 NO.2-1 PT 1/4 HOLD OF M14 WHILE REF. NO.2-1 IS
 A DRAIN PLUG PT 1/4.

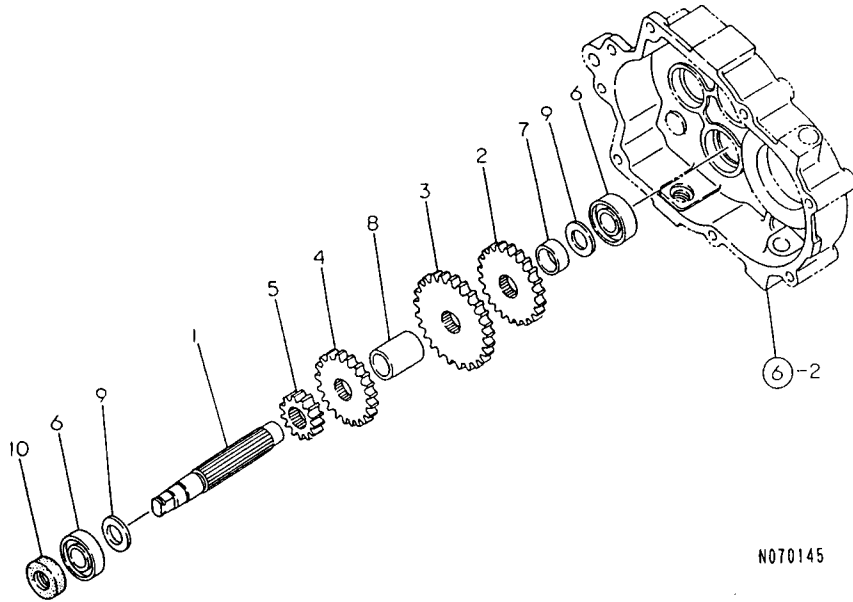
8. 2ND SHAFT

↑-----↑
 | 1C12 |
 | (1C07) |
 ↑-----↑
 NPC-2945

8. 2ND SHAFT

96.01.24

(A)=MCG95(-PQ(R (D)=
 (B)= (E)=
 (C)= (F)=



REF. NO.	LEV. 0	PART NO.	DESCRIPTION	-----Q'TY----- I P/U A R						
				(A)	(B)	(C)	(D)	(E)	(F)	
1	.	1N1296-25000	SHAFT,2ND	1						1
2	.	1N1296-25010	GEAR 33	1						1
3	.	1N1296-25020	GEAR 41	1						1
4	.	1N3500-25010	GEAR 38	1						1
5	.	1N1291-25040	GEAR 16	1						1
6	.	24101-062034	BALL BEARING	2						1
7	.	1N1291-25050	COLLAR 20.5X26X11	1						1
8	.	1N1291-25060	COLLAR 20.2X27.2X33	1						1
9	.	1N1430-25090	COLLAR	2						1
10	.	24421-173507	SEAL TC17 35 07, OIL	1						1

N070145

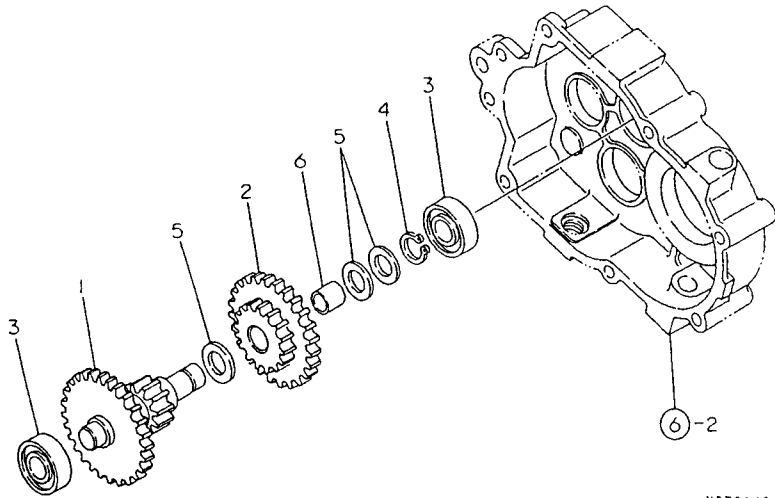
9. SIDE CLUTCH SHAFT

+-----+
 | 1C13 |
 | (1C07) |
 +-----+
 NPC-2945

9. SIDE CLUTCH SHAFT

96.01.24

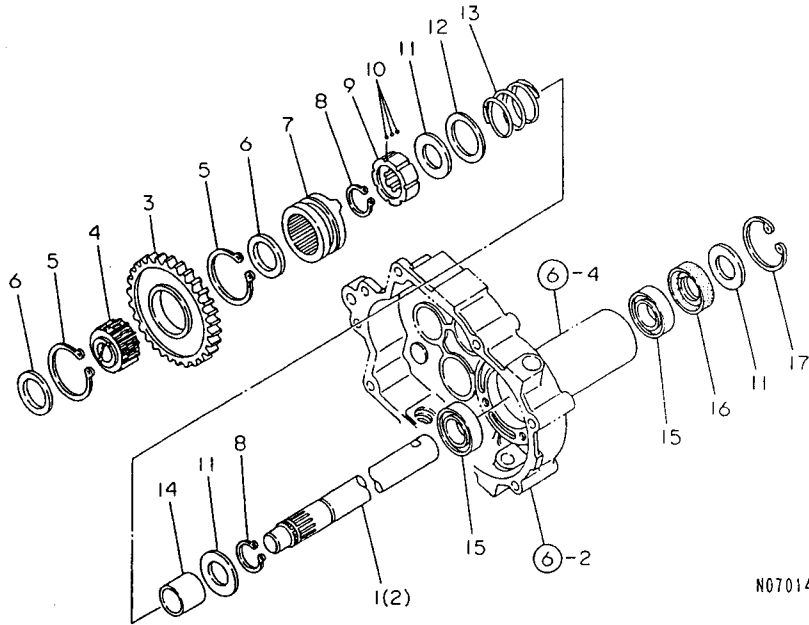
(A)=MCG95(-PQ)(R (D)=
 (B)= (E)=
 (C)= (F)=



NO70146

REF. NO.	LEV. 0	PART NO.	DESCRIPTION	Q'ITY						I P/U A R
				(A)	(B)	(C)	(D)	(E)	(F)	
1	.	1N1291-25070	SHAFT COMP.,3RD	1						1
2	.	1N1430-25060	GEAR 24/41T	1						1
3	.	24101-062034	BALL BEARING	2						1
4	.	22242-000170	CIRCLIP 17	1						10
5	.	1N1430-25090	COLLAR	3						1
6	.	1N1291-25080	BUSH 1715	1						1

10. AXLE



N070147

+-----+
 I 1C14 I
 I (1C07) I
 +-----+
 NPC-2945

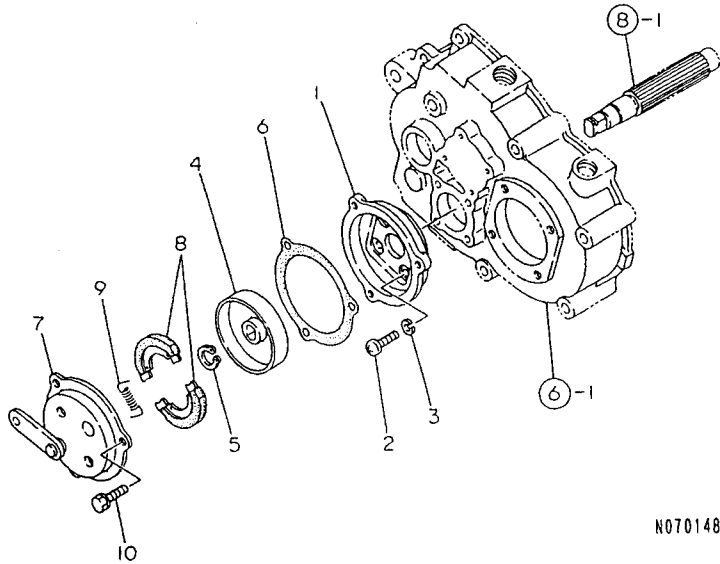
10. AXLE

96.01.24

(A)=MCG95(-PQ(R (D)=
 (B)= (E)=
 (C)= (F)=

REF. NO.	LEV. 0	PART NO.	DESCRIPTION	-----Q'TY-----						I P/U A R
				(A)	(B)	(C)	(D)	(E)	(F)	
1	.	1N1291-25090	AXLE	1						1
2	.	1N3500-25020	AXLE	1						1
3	.	1N1291-25100	GEAR 44	1						1
4	.	1N1291-25110	GEAR 28, CLUTCH	1						1
5	.	22242-000500	CIRCLIP 50	2						10
6	.	1N1291-25120	PLATE, BALL SUPPORT'G	2						1
7	.	1N1291-25134	GEAR 28, SIDE CLUTCH	2						1
8	.	22242-000250	CIRCLIP 25S	4						10
9	.	1N1291-25140	BOSS, DRIVE	2						1
10	.	1N1291-25150	BALL 4, STEEL	42						1
11	.	1N1291-25200	COVER, OIL SEAL	6						1
12	.	1N1291-25170	LINER 2.0X35.5X50	2						1
13	.	1N1291-25180	SPRING, CLUTCH	2						1
14	.	1N1291-25190	COLLAR 25.2X31.8X27.	2						1
15	.	24101-060054	BALL BEARING	4						1
16	.	24421-254708	SEAL TC25 47 08, OIL	2						1
17	.	22252-000470	CIRCLIP 47	2						10

11. BRAKE



N070148

+-----+
 | 1C15 |
 | (1C07) |
 +-----+
 NPC-2945

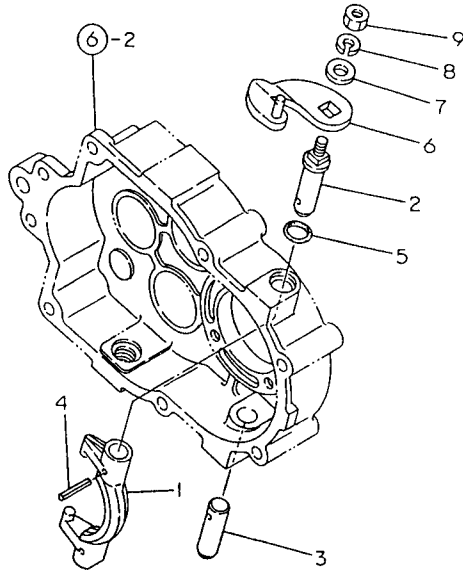
11. BRAKE

96-01.24

(A)=MCG95(-PQ(R (D)=
 (B)= (E)=
 (C)= (F)=

REF. NO.	LEV. 0	PART NO.	DESCRIPTION	-----QTY-----						I P/U A R
				(A)	(B)	(C)	(D)	(E)	(F)	
1	.	1N1296-25040	MOUNT, BRAKE	1						1
2	.	26557-060162	SCREW M 6X 16	4						10
3	.	22217-060000	SPRING WASHER 6	4						10
4	.	1N1291-25220	DRUM, BRAKE	1						1
5	.	22242-000140	CIRCLIP 14	1						10
6	.	1N1291-25230	PACKING, BRAKE PLATE	1						1
7	.	1N1291-25240	PLATE COMP., BRAKE	1						1
8	.	1N1291-25250	SHOE, BRAKE	2						1
9	.	1N1291-25260	SPRING, BRAKE SHOE	2						1
10	.	26016-060124	BOLT 6X12 W/L.W.	3						30

12. SIDE CLUTCH



N070149

+-----+
 I 1C16 I
 I (1C07) I
 +-----+
 NPC-2945

12. SIDE CLUTCH

96.01.24

(A)=MCG95(-PQ(R (D)=
 (B)= (E)=
 (C)= (F)=

REF. NO.	LEV. 0	PART NO.	DESCRIPTION	-----Q'TY-----						I	P	U	A	R
				(A)	(B)	(C)	(D)	(E)	(F)					
1	.	1N1296-25050	SHIFTER, SIDE CLUTCH	2										1
2	.	1N1296-25060	PIN, SHIFT LEVER UPPR	2										1
3	.	1N1296-25070	PIN, SHIFT LEVER LOWR	2										1
4	.	22351-050025	SPRING PIN 5X25	4										10
5	.	24311-000140	O-RING 1A P-14.0	2										10
6	.	1N1291-25300	LEVER, SIDE CLUTCH	2										1
7	.	22137-080000	WASHER 8, POLISHED	2										10
8	.	22217-080000	SPRING WASHER 8	2										10
9	.	26717-080002	NUT 8	2										10

N070149

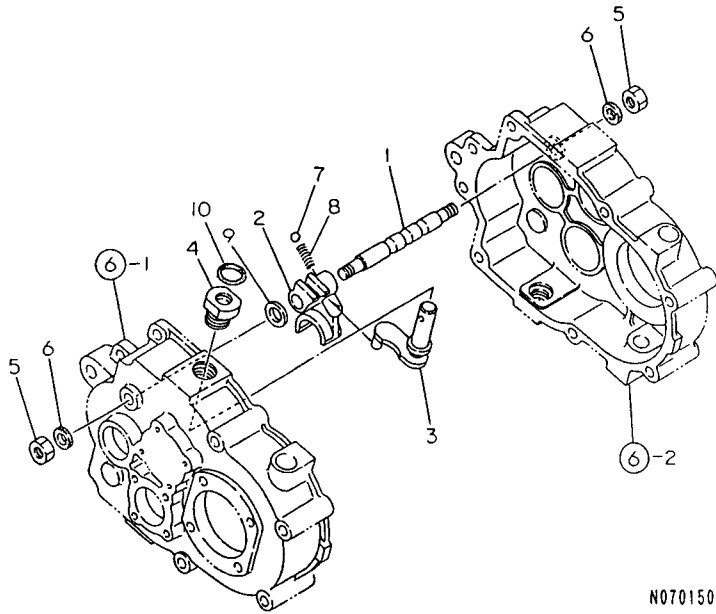
13. MAIN CHANGE

+-----+
 | 1001 |
 | (1007) |
 +-----+
 NPC-2945

13. MAIN CHANGE

96.01.24

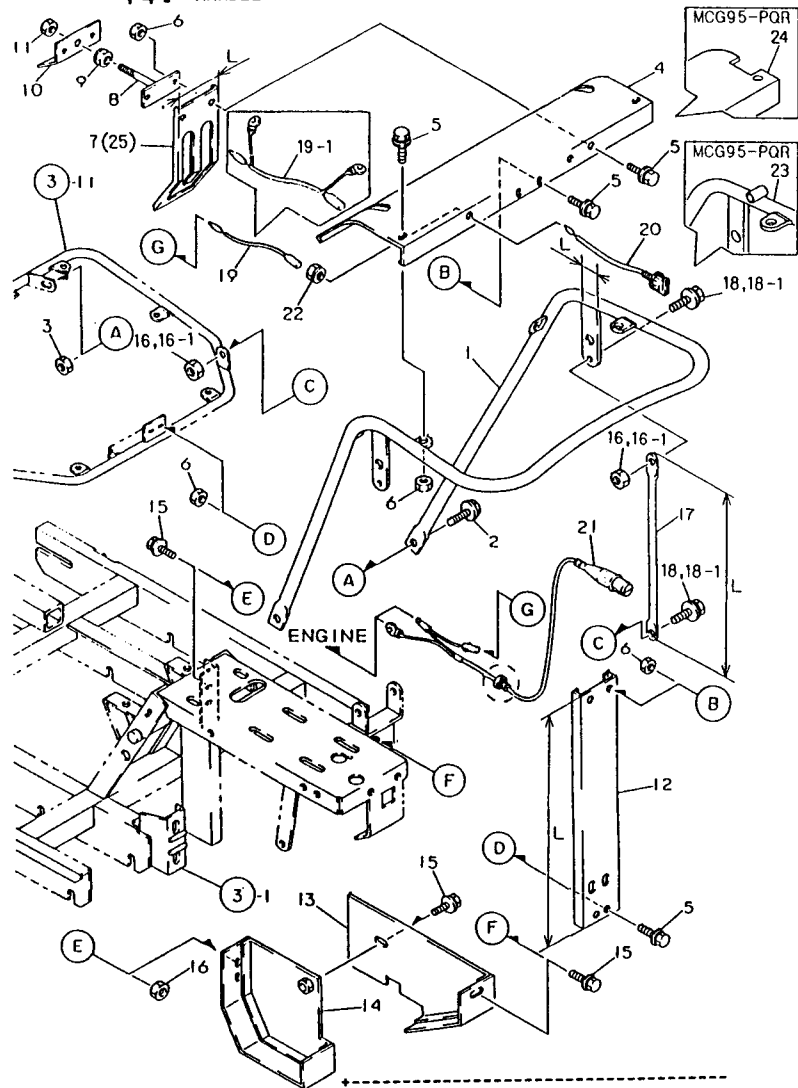
(A)=MCG95(-P&R (D)=
 (B)= (E)=
 (C)= (F)=



N070150

REF. NO.	LEV. 0	PART NO.	DESCRIPTION	-----Q'TY-----						I P/U A R
				(A)	(B)	(C)	(D)	(E)	(F)	
1	.	1N1291-26000	ROD, SHIFTER	1						1
2	.	1N1291-26010	SHIFTER, GEAR	1						1
3	.	1N1291-26020	LEVER, SHIFT	1						1
4	.	1N1291-26030	GUIDE, SHIFT LEVER	1						1
5	.	26717-100002	NUT M10	2						10
6	.	1N1430-26030	WASHER, SEAL	2						1
7	.	1N1150-25010	BALL 8, STEEL	1						1
8	.	1N1291-26040	SPRING, FORK	1						1
9	.	1N1291-26050	LINER 2.3X22X13.5	1						1
I 10	.	24311-000140	O-RING 1A P-14.0	1						W 10
		(A=F015946)								

14. HANDLE



N070151

- (1) EXCLUSIVE PARTS FOR MCG95-PQ
- (2) EXCLUSIVE PARTS FOR MCG95-PQR
- (3) REF.NO.1 HAS L=32 MM WHILE REF. NO.1-1 HAS L=38 MM.
- (4) REF.NO.17 HAS L=355 MM WHILE REF. NO.17-1 HAS 346 MM.
- * REF.NO.21 IS PROVIDED WITH CIRCLE-MARKED PARTS WHILE REF.NO.21-1 IS NOT PROVIDED WITH CIRCLE-MARKED.
- (5) REF.NO.7 HAS L=79 MM WHILE REF. NO.7-1 HAS L=85 MM.

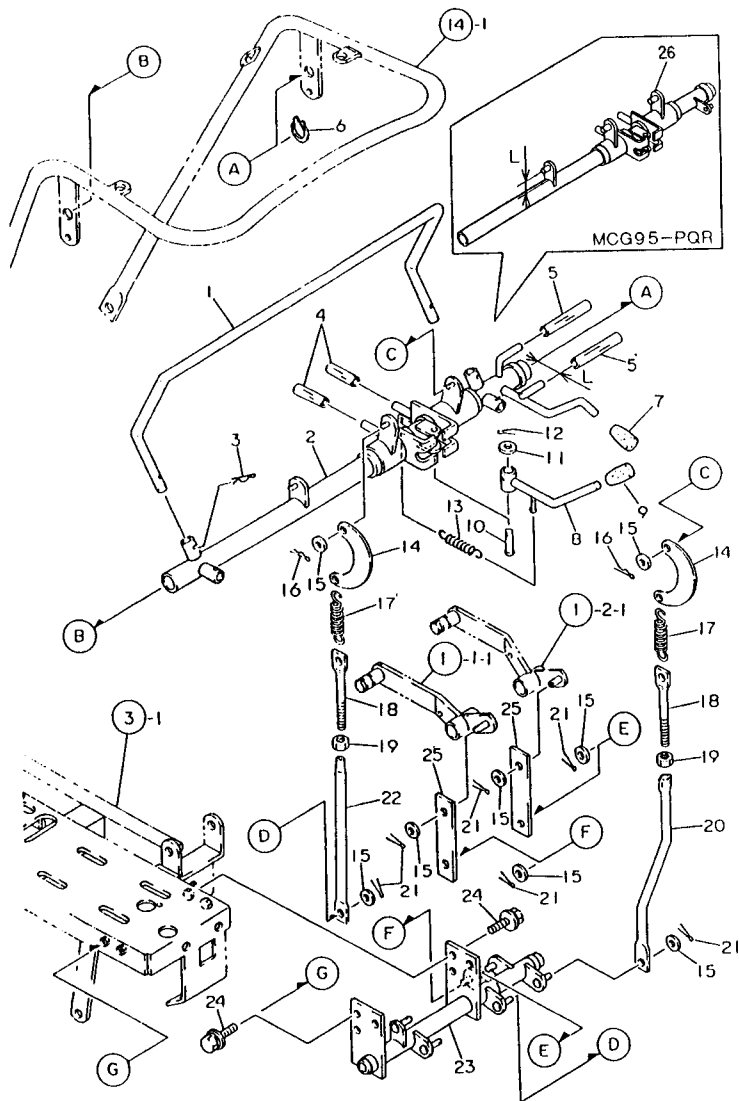
14. HANDLE

1003
1(1002)
NPC-2945

(A)=MCG95(-PQ(R (D)=
(B)= (E)=
(C)= (F)=

REF. NO.	LEV. O	PART NO.	DESCRIPTION	Q'TY						I	P	U	A	R
				(A)	(B)	(C)	(D)	(E)	(F)					
1	.	1N3500-47000	HANDLE A	1									1	
I 1-	1	1N3500-47001 (A=F011099)	HANDLE A	1								S	1	(3)
I 1-	2	1N3500-47001-1 (A=F019673)	HANDLE A	1								S	1	
2	.	26018-100254	BOLT M10X 25	2									10	
3	.	26367-100002	U-NUT M10	2									10	
4	.	1N3500-58000	PANEL	1									1	
5	.	1N1291-58080	BOLT 6X16 W/P&SW.	10									1	
6	.	26367-060002	NUT M 6	10									30	
7	.	1N3500-58010	PRATE A,GUIDE	1									1	
I 7-	1	1N3500-58011 (A=F020257)	PRATE A,GUIDE	1								S	1	(5)
8	.	1N3500-42080	STOPPER A	1									1	
9	.	26051-100002	NUT M10	1									10	
10	.	1N3500-42100	STOPPER C	1									1	
11	.	26757-100002	LOCK NUT M10	1									10	
12	.	1N3500-58140	STAY,HANDLE	1									1	
I 12-	1	1N3500-58141 (A=F012447)	STAY,HANDLE	1								S	1	(6)
13	.	1N3500-58080	COVER A,UNDER	1									1	
14	.	1N3500-58110	COVER D,UNDER	1									1	
15	.	26018-080204	BOLT M 8X 20	4									20	
16	.	26367-080002	U-NUT M 8	4									10	
I 16-	1	26367-080002 (A=F018557)	U-NUT M 8	6								K	10	
17	.	1N3500-47020	STAY	1									1	
I 17-	1	1N3501-47030 (A=F011099)	STAY	1								S	1	(4)
I 17-	2	1N3501-47030	STAY	2								K	1	
18	.	26018-080254 (A=F018557)	BOLT M 8X 25	2									10	
I 18-	1	26018-080254	BOLT M 8X 25	4								K	10	
19	.	1N1150-52000 (A=F018557)	WIRE 550,STOP LEAD	1									1	(1)
I 19-	1	1N3501-52000	WIRE, LEAD	1								S	1	
20	.	1A1470-40900 (A=F019547)	SWITCH,STOP	1									1	(1)
21	.	1N1291-51030	SWITCH,SAFETY	1									1	(1)
I 21-	1	1N1291-51031 (A=F012411)	SWITCH,SAFETY	1								S	1	(1)
22	.	26051-080002	NUT M 8	1									20	
I 23	.	1N3500-47080	HANDLE 1	1									1	(2)
I 24	.	1N3500-58270	PANEL A,CONTROL	1									1	(2)
I 25	.	1N3500-58240	PLATE 1,GUIDE	1									1	(2)

15. TRAVEL LEVER



N070152

↑ (1) EXCLUSIVE PART FOR MCG95-PQR
 ↑ (2) REF. NO. 2 L=25 MM WHILE REF.

↑ NO. 2-1 HAS L=29 MM.
 ↑ (3) REF. NO. 3 L=30 MM WHILE REF.
 ↑ NO. 3-1 HAS L=37 MM.

15. TRAVEL LEVER

96.01.24

↑-----↑
 ↑ 1D05 ↑
 ↑ (1D02) ↑
 ↑-----↑
 NPC-2945

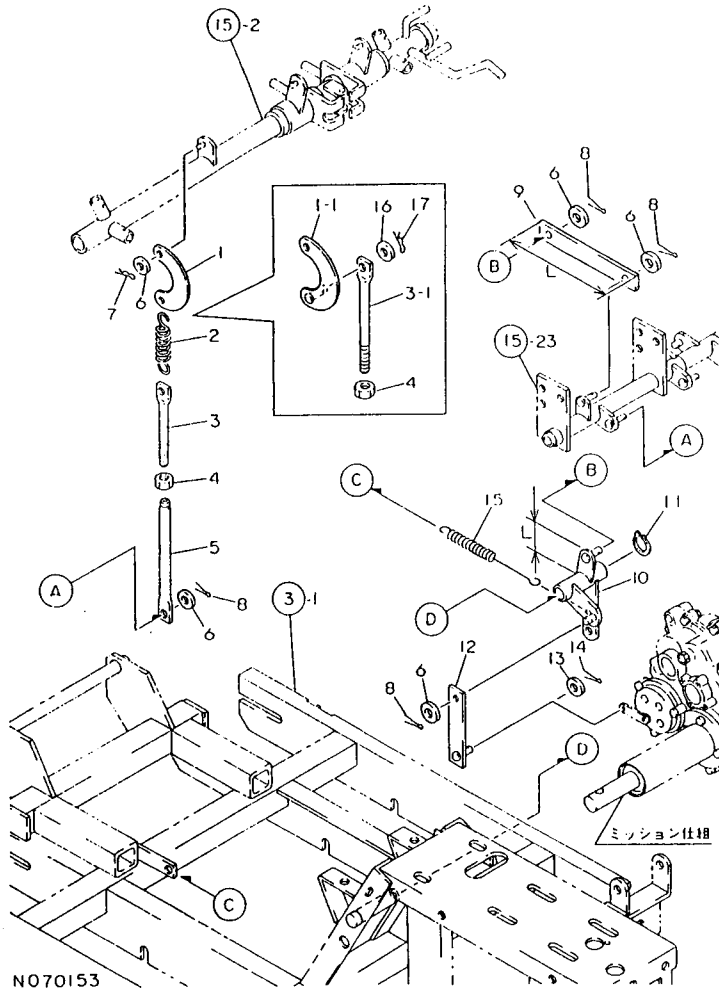
(A)=MCG95(-PR(R (D)=
 (B)= (E)=
 (C)= (F)=

REF. NO.	LEV. 0	PART NO.	DESCRIPTION	-----Q'TY-----						I	P/U	A	R
				(A)	(B)	(C)	(D)	(E)	(F)				
1	.	1N3500-42040	LEVER, CLUTCH BRAKE	1								1	
2	.	1N3500-42000	LEVER, OPERATION	1								1	
I 2-	1	1N3500-42001	LEVER, OPERATION	1						S		1	(2)
(A=FD11099)													
3	.	22360-160000	SNAP PIN 16	2								10	
4	.	1N1240-47130	HOSE, VINYL	2								1	
5	.	1N1277-42270	HOSE, VINYL	2								1	
6	.	22242-000250	CIRCLIP 25S	1								10	
7	.	1N3500-44000	GRIP, RED	1								1	
8	.	1N3500-42050	LEVER A, SUB-CHANGE	1								1	
9	.	1N1216-44010	GRIP	1								1	
10	.	1N3500-42070	PIN	1								1	
11	.	22137-100000	WASHER 10, POLISHED	1								10	
12	.	22417-250250	COTTER PIN 2.5X25	1								10	
13	.	1N1151-53000	SPRING 12.5X54, TENS.	1								1	
14	.	1N1240-42050	LINK, CRESCENT	2								1	
15	.	22137-080000	WASHER 8, POLISHED	8								10	
16	.	22360-080000	SNAP PIN 8	2								10	
17	.	1N1210-53030	SPRING 21.5X78, TENS.	2								1	
18	.	1N1360-22090	SCREW 8X94, ADJUST	2								1	
19	.	26757-080002	LOCK NUT M 8 PLATED	2								10	
20	.	1N1297-42260	ROD	1								1	
21	.	22417-250200	COTTER PIN 2.5X20	6								10	
22	.	1N1362-42110	ROD A, CLUTCH	1								1	
23	.	1N3500-42111	LINK, CLUTCH BRAKE	1								1	
24	.	26018-080204	BOLT M 8X 20	4								20	
25	.	1N1220-42040	BRAKE E	2								1	
I 26	.	1N3500-42200	LEVER A, CONTROL	1									(1
I 26-	1	1N3500-42201	LEVER A, CONTROL	1						S			(3
(A=FD19909)													

REMARKS	
(1) MCG95-PQR 専用部品	(1) EXCLUSIVE PART FOR MCG95-PQR
(2) 参照品 NO. 2 L=25, NO. 2-1 L=29	(2) REF. NO. 2 L=25 MM WHILE REF.
(3) 参照品 NO. 3 L=30, NO. 3-1 L=37	(3) REF. NO. 3 L=30 MM WHILE REF.
	↑ NO. 2-1 HAS L=29 MM.
	↑ (3) REF. NO. 3 L=30 MM WHILE REF.
	↑ NO. 3-1 HAS L=37 MM.

N070152

16. BRAKE LEVER



↑-----↑
 I (1) REF. NO.9 L=394 MM WHILE REF.
 I NO.9-1 HAS L=386 MM.
 I (2) REF. NO.10 L=30 MM WHILE REF.
 I NO.10-1 HAS L=40 MM.
 -----↑

↑-----↑
 I 1006 I
 I (1002) I
 ↑-----↑
 NPC-2945

16. BRAKE LEVER

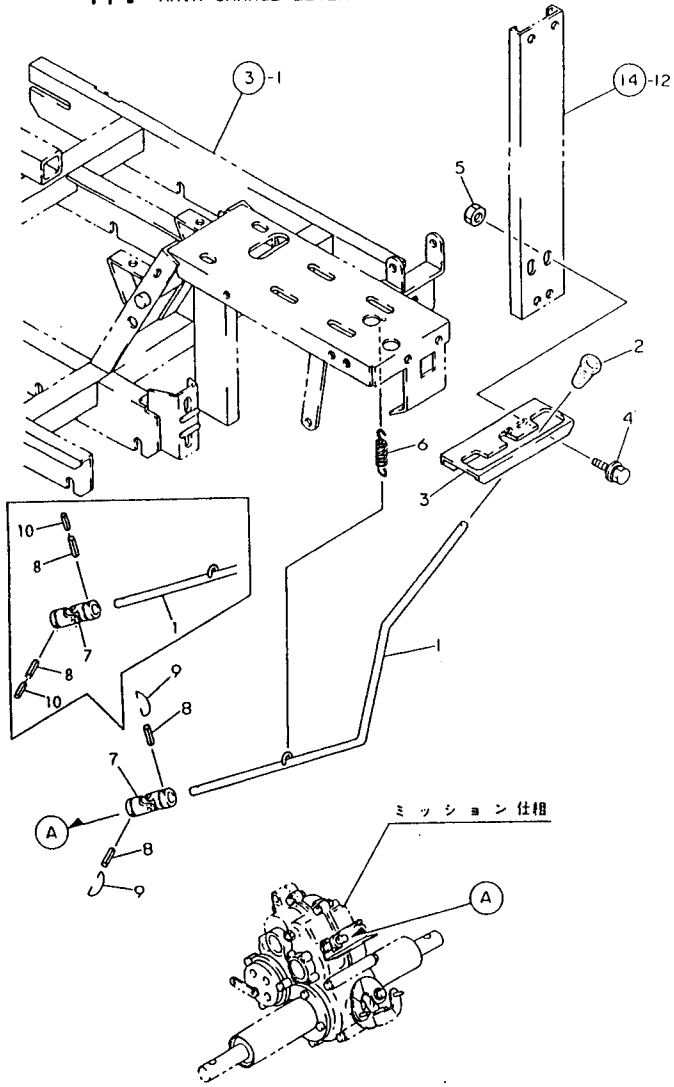
96.01.24

(A)=MCG95(-PQ(R (D)=
 (B)= (E)=
 (C)= (F)=

REF. NO.	LEV. 0	PART NO.	DESCRIPTION	-----Q'TY-----						I	P/U	A	R
				(A)	(B)	(C)	(D)	(E)	(F)				
1	.	1N1240-42050	LINK,CRESCENT	1									1
1- 1	.	1N1360-22130	LINK,CRESCENT	1								S	1
		(A=FD10299)											
2	.	1N1210-53030	SPRING 21.5X78,TENS.	1							Z		1
		(A=FD10299)											
3	.	1N1360-22090	SCREW 8X94,ADJUST	1									1
3- 1	.	1N1110-42001	ROD A,CLUTCH BRAKE	1							S		1
		(A=FD10299)											
4	.	26757-080002	LOCK NUT M 8 PLATED	1									10
5	.	1N1362-42110	ROD A,CLUTCH	1									1
6	.	22137-080000	WASHER 8, POLISHED	5									10
7	.	22360-080000	SNAP PIN 8	1									10
8	.	22417-250200	COTTER PIN 2.5X20	4									10
9	.	1N3500-42150	ROD C,BRAKE	1									1
I 9- 1	.	1N3500-42151	ROD C,BRAKE	1							S		(1)
		(A=FD19547)											
10	.	1N3500-42120	LINK,BRAKE	1									1
I 10- 1	.	1N3500-42121	LINK,BRAKE	1							S		(2)
		(A=FD19547)											
11	.	22242-000160	CIRCLIP 16	1									10
12	.	1N3500-42130	RODE A,BRAKE	1									1
13	.	22137-060000	WASHER 6, POLISHED	1									10
14	.	22417-200160	COTTER PIN 2.0X16	1									10
15	.	1N1293-53000	SPRING,BRAKE RETURN	1									1
16	.	22137-080000	WASHER 8, POLISHED	1								W	10
		(A=FD10299)											
17	.	22360-080000	SNAP PIN 8	1								W	10
		(A=FD10299)											

-----REMARKS-----	
(1) ㊦㊦NO.9 L=394,NO.9-1 L=386㊦	I (1) REF. NO.9 L=394 MM WHILE REF.
(2) ㊦㊦NO.10 L=30,NO.10-1 L=40㊦	I NO.9-1 HAS L=386 MM. I (2) REF. NO.10 L=30 MM WHILE REF. I NO.10-1 HAS L=40 MM.

17. MAIN CHANGE LEVER



+-----+
 | 1007 |
 | (1002) |
 +-----+
 NPC-2945

17. MAIN CHANGE LEVER

96.01.24

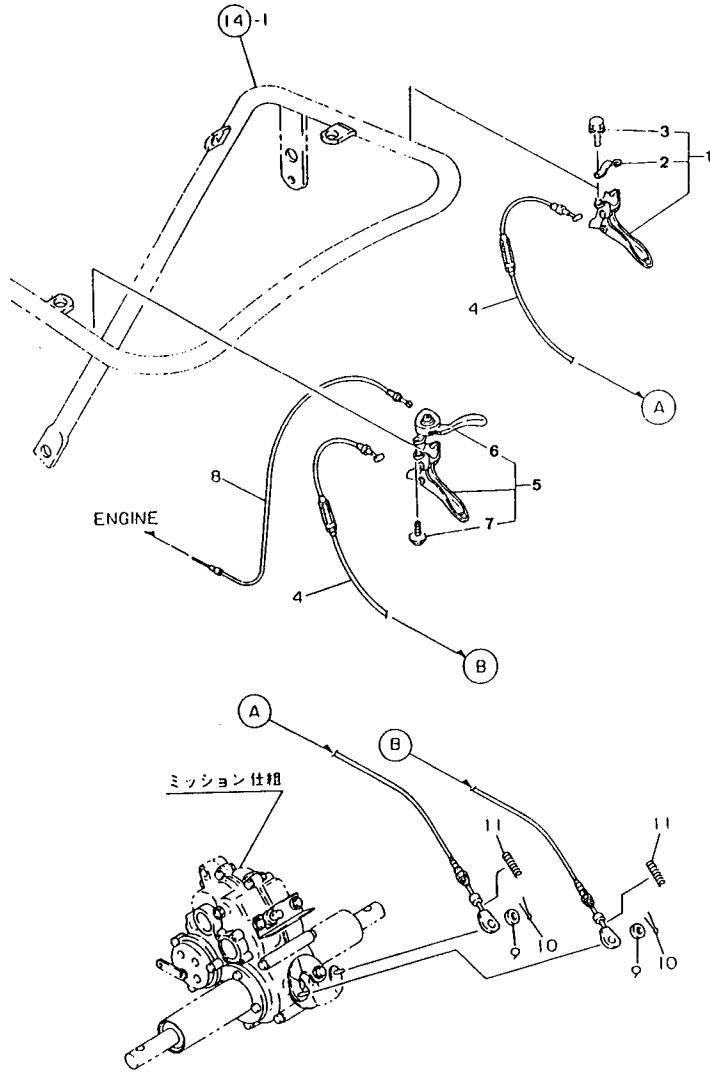
(A)=MCG95(-PQ(R (D)=
 (B)= (E)=
 (C)= (F)=

REF. NO.	LEV. 0	PART NO.	DESCRIPTION	-----Q'TY-----						I P/U A R
				(A)	(B)	(C)	(D)	(E)	(F)	
1	.	1N3500-41010	LEVER A, CHANGE	1						1
2	.	1N1101-44010	GRIP 10, CLUTCH	1						1
3	.	1N3500-41030	GUIDE A, CHANGE	1						1
4	.	1N1291-58080	BOLT 6X16 W/P&SW.	2						1
5	.	26367-060002	NUT M 6	2						30
6	.	1N1366-53000	SPRING 12.5X34.5, TNS	1						1
7	.	1N3500-41000	JOINT 12X14, UNIVERSL	1						1
8	.	22351-050030	SPRING PIN 5X30	2						10
9	.	1N1185-41010	CIRCLIP, CHANGE	2						Z 1
10	.	22351-030030	SPRING PIN 3X30	2						W 10
		(A=F011720)								
		(A=F011720)								

N070154

N070154

18. SIDE CLUTCH LEVER



N070155

18. SIDE CLUTCH LEVER

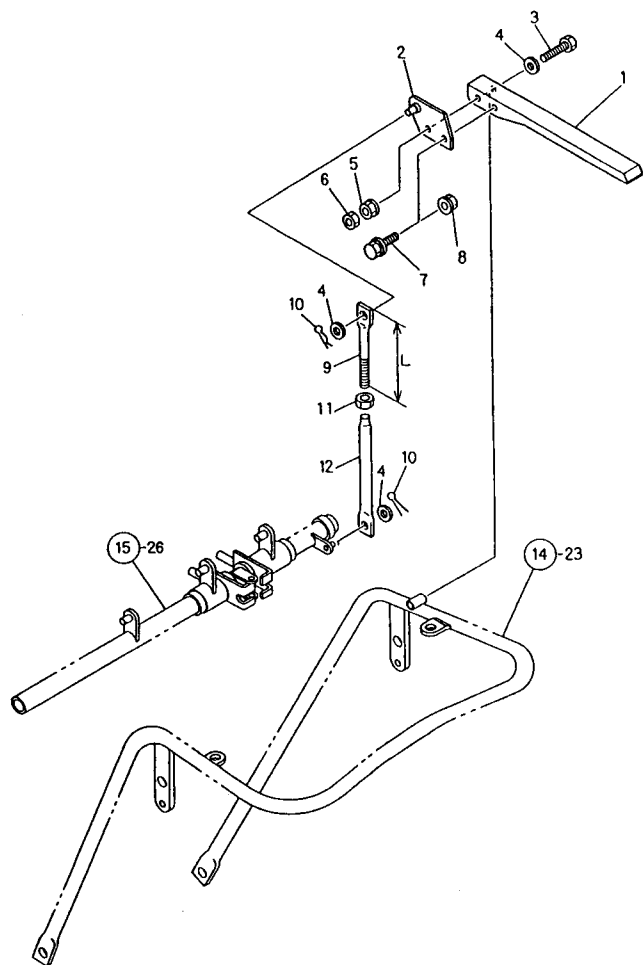
96.01.24

+-----+
| 1008 |
| (1002) |
+-----+
NPC-2945

(A)=MCG95(-P&R (D)=
(B)= (E)=
(C)= (F)=

REF. NO.	LEV. 0	PART NO.	DESCRIPTION	-----Q'TY-----						I P/U A R
				(A)	(B)	(C)	(D)	(E)	(F)	
I 1	.	1E4490-51700	LEVER CMP.,SD.CLUTCH	1						1
I 2	..	1N3500-51030	BAND 25.4	1						1
I 3	..	26014-060259	BOLT 6X25 W/PL.&SP.W	2						10
4	.	1N3500-51000	WIRE L,SIDE CLUTCH	2						1
I 5	.	1E4490-51730	LEVER R CMP,SD.CLTCH	1						1
I 6	..	1E4490-51760	LEVER,ACCELERATOR	1						1
I 7	..	26014-060259	BOLT 6X25 W/PL.&SP.W	2						10
8	.	1N1360-51000	WIRE,THROTTLE	1						1
9	.	22137-060000	WASHER 6, POLISHED	2						10
10	.	22417-200160	COTTER PIN 2.0X16	2						10
11	.	1N1285-42160	SPRING 11X65,COMPRES	2						W 1
(A=F012261)										

22. DEADMAN LEVER(ADD. ITEM



N112561

↑-----↑
 | (1) GROUP NO.22 EXCLUSIVE PARTS
 | FOR MCG95-PQR
 | (2) REF. NO.9 L=94 MM WHILE REF.
 | NO.9-1 HAS L=60 MM.
 ↓-----↓

↑-----↑
 | 1DD9 |
 | (1002) |
 ↓-----↓
 NPC-2945

22. DEADMAN LEVER(ADD. ITEM

96-01.24

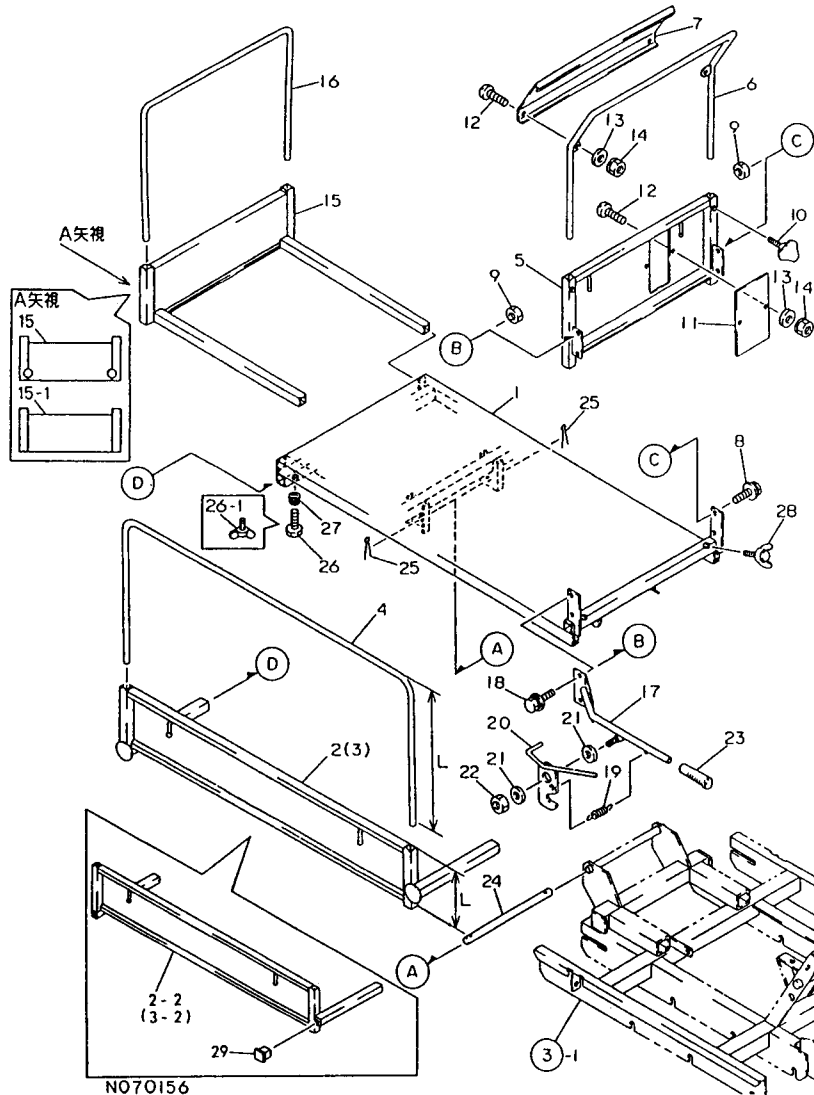
(A)=MCG95(P&R (D)=
 (B)= (E)=
 (C)= (F)=

REF. NO.	LEV. 0	PART NO.	DESCRIPTION	-----Q'TY-----						I	P/U	A	R
				(A)	(B)	(C)	(D)	(E)	(F)				
1	.	1N1723-31360	LEVER, DEADMAN	1								1	
2	.	1N3501-42100	BRACKET A, DEADMN.LVR	1									
3	.	26116-080552	BOLT M 8X 55 PLATED	1								10	
4	.	22137-080000	WASHER 8, POLISHED	3								10	
5	.	26347-080002	U-NUT M 8	1								10	
6	.	26757-080002	LOCK NUT M 8 PLATED	1								10	
7	.	26018-080204	BOLT M 8X 20	1								20	
8	.	26367-080002	U-NUT M 8	1								10	
9	.	1N1360-22090	SCREW 8X94, ADJUST	1								1	
I 9-1	.	1N3506-42160	SCREW 8X60, ADJUST	1						S		(2	
		(A=F020158)											
10	.	22360-080000	SNAP PIN 8	2								10	
11	.	26757-080002	LOCK NUT M 8 PLATED	1								10	
12	.	1N1270-22132	ROD B, CLUTCH CONNECT	1								1	

----- REMARKS -----
 (1) (1) GROUP NO.22 EXCLUSIVE PARTS
 (2) (2) REF. NO.9 L=94, NO.9-1 L=60
 FOR MCG95-PQR
 (2) REF. NO.9 L=94 MM WHILE REF.
 NO.9-1 HAS L=60 MM.

N112561

19. PLATFORM CARRIER



↑-----↑
 I (1) RFE. NO.2 HAS L=189 MM WHILE REF.
 I NO.2-1 HAS L=169 MM.
 I (2) REF. NO.3 HAS L=189 MM WHILE REF.
 I NO.3-1 HAS L=169 MM.
 I (3) REF. NO.4 HAS L=480 MM WHILE REF.
 I NO.4-1 HAS L=430 MM.

19. PLATFORM CARRIER

96.01.24

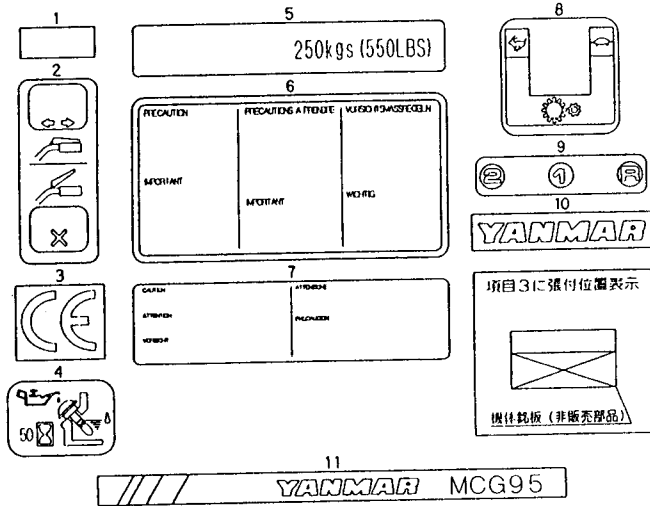
↑-----↑
 I 1D11 I
 I (1D10) I
 ↑-----↑
 NPC-2945

(A)=MCG95(-PQR) (D)=
 (B)= (E)=
 (C)= (F)=

REF. NO.	LEV. 0	PART NO.	DESCRIPTION	Q'TY						I	P	U	A	R
				(A)	(B)	(C)	(D)	(E)	(F)					
1	.	1N3500-64000	CARRIER, PLATFORM	1									1	
2	.	1N3500-65000	PLATE L, SIDE	1									1	
I 2-1	.	1N3500-65001	PLATE L, SIDE	1								S	1	(1)
(A=FD10699)														
2-2	.	1N3500-65002	PLATE L, SIDE	1									S	1
(A=FD11356)														
3	.	1N3500-65010	BOARD R, SIDE	1									1	
I 3-1	.	1N3500-65011	BOARD R, SIDE	1									S	1
(A=FD10699)														
3-2	.	1N3500-65012	SIDE PLATE R	1									S	1
(A=FD11356)														
4	.	1N3500-65050	PIPE, GUIDE	2										1
I 4-1	.	1N3500-65051	PIPE, GUIDE	2									S	1
(A=FD10699)														
5	.	1N3500-66000	PLATE, BAKE	1										1
6	.	1N1291-66280	PIPE, BACK	1										1
7	.	1N1291-66260	PLATE C, BACK	1										1
8	.	26018-080204	BOLT M 8X 20	2										20
9	.	26367-080002	U-NUT M 8	4										10
10	.	1N1091-58120	BOLT M8X25, WING	2										1
11	.	1N3500-66030	PLATE C, BACK	1										1
12	.	26557-060162	SCREW M 6X 16	4										10
13	.	22137-060000	WASHER 6, POLISHED	4										10
14	.	26051-060002	NUT M 6	4										30
15	.	1N1291-65240	PLATE, FRONT	1										1
I 15-1	.	1N1291-65241	PLATE, FRONT	1									S	1
(A=FD11356)														
16	.	1N1291-65220	PIPE F, GUIDE	1										1
17	.	1N3500-64070	LEVER, DUMP	1										1
18	.	26018-080254	BOLT M 8X 25	2										10
19	.	1N1151-53000	SPRING 12.5X54, TENS.	1										1
20	.	1N3500-64110	LEVER, LOCK	1										1
21	.	22137-120000	WASHER 12, POLISHED	2										10
22	.	26347-120002	U-NUT M12	1										10
23	.	1N1101-44000	GRIP, SIDE CLUTCH	1										1
24	.	1N1366-64250	PIN, FULCRUM	1										1
25	.	22417-400300	COTTER PIN 4.0X30	2										10
26	.	1N1150-66090	BOLT, WING	4										1
26-1	.	26647-100302	BOLT 10X30, WING	4									S	10
(A=FD10699)														
27	.	1N1151-53020	SPRING 10.5X25, COMPR	4										1
28	.	26647-100202	WING BOLT M10X20	2										5
29	.	1N1520-53020	PLUG 25J, SQUARE OIL	4										W 1
(A=FD11356)														

----- REMARKS -----
 (1) REF. NO.2 L=189, NO.2-1 L=169 (1) REF. NO.2 HAS L=189 MM WHILE REF.
 (2) REF. NO.3 L=189, NO.3-1 L=169 (1) NO.2-1 HAS L=169 MM.
 (3) REF. NO.4 L=480, NO.4-1 L=430 (2) REF. NO.3 HAS L=189 MM WHILE REF.
 (1) NO.3-1 HAS L=169 MM.
 (3) REF. NO.4 HAS L=480 MM WHILE REF.
 (1) NO.4-1 HAS L=430 MM.

23. LABELS(ADD. ITEM)



+-----+
 | 1D15 |
 | (1012) |
 +-----+
 NPC-2945

23. LABELS(ADD. ITEM)

96.01.24

(A)=MCG95(PQR) (D)=
 (B)= (E)=
 (C)= (F)=

REF. NO.	LEV. 0	PART NO.	DESCRIPTION	-----Q'TY-----						I P/U A R
				(A)	(B)	(C)	(D)	(E)	(F)	
1	.	1N1070-93050	TAPE, REFLECTIVE	4						4
2	.	1N3507-93050	DECAL, HYD. CONTROL	1						
3	.	1N3507-93060	DECAL, HYD. CONTROL	1						
4	.	1N1362-93070	LABEL, PQ-2	1						
5	.	1N1362-93100	LABEL, PQ-5	1						
6	.	1N1362-93140	LABEL, PQ-9	1						
7	.	1N3507-93090	DECAL, HYD. CONTROL	1						
8	.	1N1362-93250	LABEL, PQ-20	1						1
9	.	1N3500-93040	LABEL, CHANGE	1						1
10	.	1N1313-93030	NAMER, SIDE	2						1
11	.	1N3500-93000	NAMER MCG95, MAIN	1						1

N112562

+-----+
 | (1) GROUP NO.23 EXCLUSIVE PARTS FOR |
 | MCG95-PQR |
 +-----+

-----REMARKS-----
 (1) (1) GROUP NO.23 EXCLUSIVE PARTS FOR
 | MCG95-PQR |

N112562

PART NO.	DESCRIPTION	CATALOG NO.	GRP. NO.	REF. NO.	LOC NO.	PART NO.	DESCRIPTION	CATALOG NO.	GRP. NO.	REF. NO.	LOC. NO.
1A1470-40900	SWITCH,STOP	NPC-2945	14	20	1D03	1N1291-25140	BOSS,DRIVE	NPC-2945	10	9	1C14
1E4490-51700	LEVER CMP.,SD.CLUTCH	NPC-2945	18	1	1D08	1N1291-25150	BALL 4,STEEL	NPC-2945	10	10	1C14
1E4490-51730	LEVER R CMP,SD.CLTCH	NPC-2945	18	5	1D08	1N1291-25170	LINER 2.0X35.5X50	NPC-2945	10	12	1C14
1E4490-51760	LEVER,ACCELERATOR	NPC-2945	18	6	1D08	1N1291-25180	SPRING,CLUTCH	NPC-2945	10	13	1C14
1N1070-91010	FUNNEL	NPC-2945	21	1	1D14	1N1291-25190	COLLAR 25.2X31.8X27.	NPC-2945	10	14	1C14
1N1070-91020	HOSE	NPC-2945	21	3	1D14	1N1291-25200	COVER,OIL SEAL	NPC-2945	10	11	1C14
1N1070-91050	WRENCH 17X19	NPC-2945	21	2	1D14	1N1291-25220	DRUM,BRAKE	NPC-2945	11	4	1C15
1N1070-91090	BAG,TOOL	NPC-2945	21	4	1D14	1N1291-25230	PACKING,BRAKE PLATE	NPC-2945	11	6	1C15
1N1070-93050	TAPE,REFLECTIVE	NPC-2945	20	1	1D13	1N1291-25240	PLATE COMP.,BRAKE	NPC-2945	11	7	1C15
			23	1	1D15	1N1291-25250	SHOE,BRAKE	NPC-2945	11	8	1C15
1N1091-36000	COVER,OIL SEAL	NPC-2945	4	8	1C08	1N1291-25260	SPRING,BRAKE SHOE	NPC-2945	11	9	1C15
			5	8	1C09	1N1291-25300	LEVER,SIDE CLUTCH	NPC-2945	12	6	1C16
1N1091-58120	BOLT M8X25,WING	NPC-2945	19	10	1D11	1N1291-25310	SHAFT KW2,INPUT	NPC-2945	7	1	1C11
1N1101-44000	GRIP,SIDE CLUTCH	NPC-2945	19	23	1D11	1N1291-26000	ROD,SHIFTER	NPC-2945	13	1	1D01
1N1101-44010	GRIP 10,CLUTCH	NPC-2945	17	2	1D07	1N1291-26010	SHIFTER,GEAR	NPC-2945	13	2	1D01
1N1101-44040	RUBBER,STOPPER	NPC-2945	3	2	1C06	1N1291-26020	LEVER,SHIFT	NPC-2945	13	3	1D01
1N1110-42001	ROD A,CLUTCH BRAKE	NPC-2945	16	3- 1	1D06	1N1291-26030	GUIDE,SHIFT LEVER	NPC-2945	13	4	1D01
1N1150-25010	BALL 8,STEEL	NPC-2945	13	7	1D01	1N1291-26040	SPRING,FORK	NPC-2945	13	8	1D01
1N1150-52000	WIRE 550,STOP LEAD	NPC-2945	14	19	1D03	1N1291-26050	LINER 2.3X22X13.5	NPC-2945	13	9	1D01
1N1150-66090	BOLT,WING	NPC-2945	19	26	1D11	1N1291-35000	SPROCKET	NPC-2945	5	10	1C09
1N1151-53000	SPRING 12.5X54,TENS.	NPC-2945	15	13	1D05	1N1291-37000	SCREW,ADJUST	NPC-2945	4	10	1C08
			19	19	1D11	1N1291-51030	SWITCH,SAFETY	NPC-2945	14	21	1D03
1N1151-53020	SPRING 10.5X25,COMPR	NPC-2945	19	27	1D11	1N1291-51031	SWITCH,SAFETY	NPC-2945	14	21- 1	1D03
1N1185-41010	CIRCLIP,CHANGE	NPC-2945	17	9	1D07	1N1291-58080	BOLT 6X16 W/P&SW.	NPC-2945	3	18	1C06
1N1185-42120	WASHER 9X25X3.2	NPC-2945	2	19	1C04				14	5	1D03
1N1190-45000	SPRING 11X72.5,TENS.	NPC-2945	1	10	1C03				17	4	1D07
1N1210-35100	U-BOLT	NPC-2945	5	14	1C09	1N1291-65220	PIPE F,GUIDE	NPC-2945	19	16	1D11
1N1210-53030	SPRING 21.5X78,TENS.	NPC-2945	15	17	1D05	1N1291-65240	PLATE,FRONT	NPC-2945	19	15	1D11
			16	2	1D06	1N1291-65241	PLATE,FRONT	NPC-2945	19	15- 1	1D11
1N1216-44010	GRIP	NPC-2945	15	9	1D05	1N1291-66260	PLATE C,BACK	NPC-2945	19	7	1D11
1N1220-42040	BRAKE E	NPC-2945	15	25	1D05	1N1291-66280	PIPE,BACK	NPC-2945	19	6	1D11
1N1240-21040	WASHER	NPC-2945	2	17	1C04	1N1292-35000	RING,FLOAT	NPC-2945	4	3	1C08
1N1240-42050	LINK,CRESCENT	NPC-2945	15	14	1D05	1N1292-35010	SHAFT	NPC-2945	4	4	1C08
			16	1	1D06				5	4	1C09
1N1240-47130	HOSE,VINYL	NPC-2945	15	4	1D05	1N1292-36000	ROLLER,LOWER TRANK	NPC-2945	5	3	1C09
1N1270-22080	GUIDE 80,BELT	NPC-2945	2	10	1C04	1N1293-53000	SPRING,BRAKE RETURN	NPC-2945	16	15	1D06
1N1270-22132	ROD B,CLUTCH CONNECT	NPC-2945	22	12	1D09	1N1296-24001	HOLDER.AXLE	NPC-2945	6	3	1C10
1N1272-22110	GUIDE 12X150,BELT	NPC-2945	2	7	1C04	1N1296-24013	PAWL,CLUTCH	NPC-2945	6	5	1C10
1N1277-42270	HOSE,VINYL	NPC-2945	15	5	1D05	1N1296-24020	SCREW M12X180	NPC-2945	6	17	1C10
1N1285-42160	SPRING 11X65,COMPRES	NPC-2945	18	11	1D08	1N1296-25000	SHAFT,2ND	NPC-2945	8	1	1C12
1N1291-22020	GUARD 40,BELT	NPC-2945	2	8	1C04	1N1296-25010	GEAR 33	NPC-2945	8	2	1C12
1N1291-24030	PLUG,OIL	NPC-2945	6	6	1C10	1N1296-25020	GEAR 41	NPC-2945	8	3	1C12
1N1291-24040	PLUG M14,DRAIN	NPC-2945	6	7	1C10	1N1296-25040	MOUNT,BRAKE	NPC-2945	11	1	1C15
1N1291-24070	PLUG,HOLED OIL	NPC-2945	6	6- 1	1C10	1N1296-25050	SHIFTER,SIDE CLUTCH	NPC-2945	12	1	1C16
1N1291-25040	GEAR 16	NPC-2945	8	5	1C12	1N1296-25060	PIN,SHIFT LEVER UPPR	NPC-2945	12	2	1C16
1N1291-25050	COLLAR 20.5X26X11	NPC-2945	8	7	1C12	1N1296-25070	PIN,SHIFT LEVER LOWR	NPC-2945	12	3	1C16
1N1291-25060	COLLAR 20.2X27.2X33	NPC-2945	8	8	1C12	1N1296-35000	PIN,SPROCKET	NPC-2945	5	11	1C09
1N1291-25070	SHAFT COMP.,3RD	NPC-2945	9	1	1C13	1N1297-21010	PULLEY,TRANSMISSION	NPC-2945	2	3	1C04
1N1291-25080	BUSH 1715	NPC-2945	9	6	1C13	1N1297-42260	ROD	NPC-2945	15	20	1D05
1N1291-25090	AXLE	NPC-2945	10	1	1C14	1N1313-93030	NAMER,SIDE	NPC-2945	20	10	1D13
1N1291-25100	GEAR 44	NPC-2945	10	3	1C14				23	10	1D15
1N1291-25110	GEAR 28,CLUTCH	NPC-2945	10	4	1C14	1N1360-22090	SCREW 8X94,ADJUST	NPC-2945	15	18	1D05
1N1291-25120	PLATE,BALL SUPPORT'G	NPC-2945	10	6	1C14				16	3	1D06
1N1291-25134	GEAR 28,SIDE CLUTCH	NPC-2945	10	7	1C14				22	9	1D09

PART NO.	DESCRIPTION	CATALOG NO.	GRP. NO.	REF. NO.	LOC. NO.	PART NO.	DESCRIPTION	CATALOG NO.	GRP. NO.	REF. NO.	LOC. NO.
1N1360-22130	LINK,CRESCENT	NPC-2945	16	1-	1D06	1N3500-42001	LEVER, OPERATION	NPC-2945	15	2-	1D05
1N1360-51000	WIRE,THROTTLE	NPC-2945	18	8	1D08	1N3500-42040	LEVER,CLUTCH BRAKE	NPC-2945	15	1	1D05
1N1362-42110	ROD A,CLUTCH	NPC-2945	15	22	1D05	1N3500-42050	LEVER A,SUB-CHANGE	NPC-2945	15	8	1D05
			16	5	1D06	1N3500-42070	PIN	NPC-2945	15	10	1D05
1N1362-93060	LABEL,PQ-1	NPC-2945	20	4	1D13	1N3500-42080	STOPPER A	NPC-2945	14	8	1D03
1N1362-93070	LABEL,PQ-2	NPC-2945	20	5	1D13	1N3500-42100	STOPPER C	NPC-2945	14	10	1D03
			23	4	1D15	1N3500-42111	LINK,CLUTCH BRAKE	NPC-2945	15	23	1D05
1N1362-93100	LABEL,PQ-5	NPC-2945	20	6	1D13	1N3500-42120	LINK,BRAKE	NPC-2945	16	10	1D06
			23	5	1D15	1N3500-42121	LINK,BRAKE	NPC-2945	16	10-	1D06
1N1362-93140	LABEL,PQ-9	NPC-2945	20	7	1D13	1N3500-42130	RODE A,BRAKE	NPC-2945	16	12	1D06
			23	6	1D15	1N3500-42150	ROD C,BRAKE	NPC-2945	16	9	1D06
1N1362-93250	LABEL,PQ-20	NPC-2945	20	8	1D13	1N3500-42151	ROD C,BRAKE	NPC-2945	16	9-	1D06
			23	8	1D15	1N3500-42200	LEVER A,CONTROL	NPC-2945	15	26	1D05
1N1362-93260	LABEL,PQ-21	NPC-2945	20	9	1D13	1N3500-42201	LEVER A,CONTROL	NPC-2945	15	26-	1D05
1N1366-53000	SPRING 12.5X34.5,TNS	NPC-2945	17	6	1D07	1N3500-44000	GRIP,RED	NPC-2945	15	7	1D05
1N1366-64250	PIN,FULCRUM	NPC-2945	19	24	1D11	1N3500-47000	HANDLE A	NPC-2945	14	1	1D03
1N1430-22070	ROLLER,TENSION	NPC-2945	1	6	1C03	1N3500-47001	HANDLE A	NPC-2945	14	1-	1D03
1N1430-24000	PLUG,BLIND	NPC-2945	6	16	1C10	1N3500-47001-1	HANDLE A	NPC-2945	14	1-	2D03
1N1430-24080	CAP,SEAL	NPC-2945	6	8	1C10	1N3500-47020	STAY	NPC-2945	14	17	1D03
1N1430-25060	GEAR 24/41T	NPC-2945	9	2	1C13	1N3500-47080	HANDLE 1	NPC-2945	14	23	1D03
1N1430-25090	COLLAR	NPC-2945	7	5	1C11	1N3500-51000	WIRE L,SIDE CLUTCH	NPC-2945	18	4	1D08
			8	9	1C12	1N3500-51030	BAND 25.4	NPC-2945	18	2	1D08
			9	5	1C13	1N3500-54000	STEP	NPC-2945	3	11	1C06
1N1430-26030	WASHER,SEAL	NPC-2945	13	6	1D01	1N3500-54001	STEP	NPC-2945	3	11-	1C06
1N1460-41040	SHAFT	NPC-2945	1	7	1C03	1N3500-54002	STEP	NPC-2945	3	11-	2C06
1N1520-53020	PLUG 25J,SQUARE OIL	NPC-2945	19	29	1D11	1N3500-54070	STEP L	NPC-2945	3	16	1C06
1N1530-24230	PLUG PT1/4	NPC-2945	6	7-	1C10	1N3500-54080	STEP R	NPC-2945	3	17	1C06
1N1550-54100	PIPE (C)	NPC-2945	3	12	1C06	1N3500-54090	BOLT,STAY	NPC-2945	3	15	1C06
1N1723-31360	LEVER,DEADMAN	NPC-2945	22	1	1D09	1N3500-58000	PANEL	NPC-2945	14	4	1D03
1N3500-21000	PULLEY,ENGINE	NPC-2945	2	1	1C04	1N3500-58010	PRATE A,GUIDE	NPC-2945	14	7	1D03
1N3500-21001	PULLEY,ENGINE	NPC-2945	2	1-	1C04	1N3500-58011	PRATE A,GUIDE	NPC-2945	14	7-	1D03
1N3500-22000	GUIDE A 70X100,BELT	NPC-2945	2	4	1C04	1N3500-58040	COVER,PULLEY	NPC-2945	3	20	1C06
1N3500-22010	GUIDE B 70X100,BELT	NPC-2945	2	6	1C04	1N3500-58070	COVER D,PULLEY	NPC-2945	3	21	1C06
1N3500-22020	GUIDE C,BELT	NPC-2945	2	9	1C04	1N3500-58080	COVER A,UNDER	NPC-2945	14	13	1D03
1N3500-22030	ARM, TENSION	NPC-2945	1	1	1C03	1N3500-58110	COVER D,UNDER	NPC-2945	14	14	1D03
1N3500-22031	ARM, TENSION	NPC-2945	1	1-	1C03	1N3500-58130	PROTECTOR	NPC-2945	3	5	1C06
1N3500-22040	ARM B,TENSION	NPC-2945	1	2	1C03	1N3500-58140	STAY,HANDLE	NPC-2945	14	12	1D03
1N3500-22041	ARM B,TENSION	NPC-2945	1	2-	1C03	1N3500-58141	STAY,HANDLE	NPC-2945	14	12-	1D03
1N3500-22090	BELT GUIDE	NPC-2945	2	7-	1C04	1N3500-58160	GUARD,UNDER	NPC-2945	3	6	1C06
1N3500-24000	CASE L,TRANSMISSION	NPC-2945	6	1	1C10	1N3500-58240	PLATE 1,GUIDE	NPC-2945	14	25	1D03
1N3500-24010	CASE R, TRANSMISSION	NPC-2945	6	2	1C10	1N3500-58270	PANEL A,CONTROL	NPC-2945	14	24	1D03
1N3500-24011	CASE R, TRANSMISSION	NPC-2945	6	2-	1C10	1N3500-64000	CARRIER,PLATFORM	NPC-2945	19	1	1D11
1N3500-24020	HOLDER,AXLE	NPC-2945	6	4	1C10	1N3500-64070	LEVER,DUMP	NPC-2945	19	17	1D11
1N3500-24030	BRACKET, OUTER	NPC-2945	6	20	1C10	1N3500-64110	LEVER, LOCK	NPC-2945	19	20	1D11
1N3500-25000	GEAR 16X19	NPC-2945	7	2	1C11	1N3500-65000	PLATE L,SIDE	NPC-2945	19	2	1D11
1N3500-25010	GEAR 38	NPC-2945	8	4	1C12	1N3500-65001	PLATE L,SIDE	NPC-2945	19	2-	1D11
1N3500-25020	AXLE	NPC-2945	10	2	1C14	1N3500-65002	PLATE L,SIDE	NPC-2945	19	2-	2D11
1N3500-31000	FRAME,BODY	NPC-2945	3	1	1C06	1N3500-65010	BOARD R,SIDE	NPC-2945	19	3	1D11
1N3500-37000	CRAWLER 180X60X35,RB	NPC-2945	4	12	1C08	1N3500-65011	BOARD R,SIDE	NPC-2945	19	3-	1D11
1N3500-41000	JOINT 12X14,UNIVERSL	NPC-2945	17	7	1D07	1N3500-65012	SIDE PLATE R	NPC-2945	19	3-	2D11
1N3500-41010	LEVER A,CHANGE	NPC-2945	17	1	1D07	1N3500-65050	PIPE, GUIDE	NPC-2945	19	4	1D11
1N3500-41030	GUIDE A,CHANGE	NPC-2945	17	3	1D07	1N3500-65051	PIPE, GUIDE	NPC-2945	19	4-	1D11
1N3500-41040	GUIDE B,CHANGE	NPC-2945	3	9	1C06	1N3500-66000	PLATE,BAKE	NPC-2945	19	5	1D11
1N3500-42000	LEVER, OPERATION	NPC-2945	15	2	1D05	1N3500-66030	PLATE C,BACK	NPC-2945	19	11	1D11

PART NO.	DESCRIPTION	CATALOG NO.	GRP. NO.	REF. NO.	LOC NO.	PART NO.	DESCRIPTION	CATALOG NO.	GRP. NO.	REF. NO.	LOC. NO.
1N3500-93000	NAHER MCG95,MAIN	NPC-2945	20	2	1D13	160590-56020	CARBURETOR ASSY	NPC-2631	7	1	1B10
			23	11	1D15	160590-56530	VALVE, CHOKE	NPC-2631	7	5	1B10
1N3500-93040	LABEL,CHANGE	NPC-2945	20	3	1D13	160590-56650	LEVER, CHOKE	NPC-2631	7	16	1B10
			23	9	1D15	160590-56670	NOZZLE, MAIN	NPC-2631	7	21	1B10
1N3501-35030	U-BOLT	NPC-2945	5	14-	1C09	160590-56671	NOZZLE, MAIN	NPC-2631	7	21-	1B10
1N3501-42100	BRACKET A,DEADMN.LVR	NPC-2945	22	2	1D09	160590-56740	JET, PILOT	NPC-2631	7	6-	1B10
1N3501-47030	STAY	NPC-2945	14	17-	1D03	160590-56770	JET, ENRICHMENT	NPC-2631	7	24	1B10
				2	1D03	160590-56771	MAIN JET	NPC-2631	7	24-	1B10
1N3501-52000	WIRE, LEAD	NPC-2945	14	19-	1D03	160590-56800	NOZZLE	NPC-2631	7	32B	1B10
1N3506-42160		NPC-2945	22	9-	1D09	160590-66010	SPRING, GOVERNOR	NPC-2631	8	11	1B12
1N3507-93050	DECAL, HYD. CONTROL	NPC-2945	23	2	1D15	160590-78091	MAGNET ASSY,FLYWHEEL	NPC-2631	9	6	1B13
1N3507-93060	DECAL, HYD. CONTROL	NPC-2945	23	3	1D15	160590-78532	IGNITER	NPC-2631	9	8	1B13
1N3507-93090	DECAL, HYD. CONTROL	NPC-2945	23	7	1D15	160590-78540	ROTOR	NPC-2631	9	7	1B13
104200-59170	GASKET 12	NPC-2631	1	8	1B03	160591-56030	CARBURETOR ASSY	NPC-2631	7	1-	1B10
				17	1B03	160592-56540	VALVE, THROTTLE	NPC-2631	7	2	1B10
106990-44660	BAND, HOSE	NPC-2631	6	25	1B08	160592-56670	BODY, FLOAT CHAMBER	NPC-2631	7	20-	1B10
114250-45310	COLLAR	NPC-2631	6	1	1B08	160593-55300	COCK ASSY, FUEL	NPC-2631	6	14-	2B08
114252-13950	BOLT M 6X 8 PLATED	NPC-2631	4	16	1B06	160593-55360	STAY, FUEL COCK	NPC-2631	6	30	1B09
114270-01600	PARALLEL PIN 8X12	NPC-2631	1	4-	1B03	160594-66011	SPRING, GOVERNOR	NPC-2631	8	11-	1B12
114370-45350	BOLT, FAN CASE	NPC-2631	6	23-	1B08	160610-01690	PLUG, DRAIN	NPC-2631	1	7	1B03
114770-61600	SEAL, OIL	NPC-2631	8	39	1B12					16	1B03
124060-77680	CLAMP 10	NPC-2631	6	34	1B09	160610-02220	SEAL, OIL	NPC-2631	1	5	1B03
160110-92610	BAG, TOOL	NPC-2631	3	9	1B05					13	1B03
160110-92710	BAR	NPC-2631	3	11	1B05	160610-04201	BOLT M 8X 53	NPC-2631	1	21	1B03
160120-76940	WASHER	NPC-2631	8	9	1B12	160610-04570	BOLT M 6X 70	NPC-2631	2	3	1B04
160120-92700	SPANNER, BOX	NPC-2631	3	10	1B05	160610-04910	NUT M14	NPC-2631	5	13	1B07
160260-78700	CLAMP, CORD	NPC-2631	6	27	1B08	160610-21290	KEY 4X 10	NPC-2631	5	18	1B07
160310-14550	WASHER	NPC-2631	5	31	1B07	160610-55100	STRAINER	NPC-2631	6	12	1B08
160310-56980	SPRING, CHOKE	NPC-2631	7	14	1B10	160610-55390	CUP, COCK	NPC-2631	6	19E-1	1B08
160310-56990	BALL, STEEL	NPC-2631	7	15	1B10	160610-55470	PIECE	NPC-2631	6	21	1B08
160321-13770	EXTENSION, MUFFLER	NPC-2631	4	14	1B06	160610-56150	GASKET, CARBURETOR	NPC-2631	4	6	1B06
160341-01950	PIPE	NPC-2631	9	42	1B14					7	33
160393-55050	GASKET, TANK CAP	NPC-2631	6	11	1B08	160610-56610	GASKET	NPC-2631	7	19	1B10
160490-14200	TAPPET	NPC-2631	5	11	1B07	160610-56611	GASKET	NPC-2631	7	23	1B10
160493-12550	HOLDER, ELEMENT	NPC-2631	4	5	1B06	160610-56630	PIN, FLOAT	NPC-2631	7	12	1B10
160495-77260	CODE	NPC-2631	9	40	1B14	160610-56740	JET, PILOT	NPC-2631	7	6	1B10
160520-07271	LABEL, DRAIN	NPC-2631	3	5	1B05	160610-56900	SCREW	NPC-2631	7	27	1B10
160520-07272	LABEL, DRAIN	NPC-2631	3	5-	1B05	160611-77250	SWITCH, STOP	NPC-2631	9	1-	1B13
160520-66291	SPRING	NPC-2631	8	22	1B12	160640-56850	SEAL	NPC-2631	7	26	1B10
160590-01330	GASKET, CYL. HEAD	NPC-2631	1	9	1B03	160662-07370	LABEL, AIR CLEANER	NPC-2631	3	7	1B05
160590-11010	HEAD ASSY, CYLINDER	NPC-2631	2	4	1B04	160664-07360	LABEL, AIR CLEANER	NPC-2631	3	6	1B05
160590-11100	VALVE, INTAKE	NPC-2631	2	8	1B04	160664-07370	LABEL, AIR CLEANER	NPC-2631	3	8	1B05
160590-11110	VALVE, EXHAUST	NPC-2631	2	9	1B04	160664-66170	WASHER, NYLON	NPC-2631	8	25	1B12
160590-14051	CAMSHAFT ASSY	NPC-2631	5	1	1B07	160664-66180	SPRING, PLATE	NPC-2631	8	26	1B12
160590-14400	ROD, PUSH	NPC-2631	5	12	1B07	160664-66220	SPRING, RETURN	NPC-2631	8	27	1B12
160590-14570	SPRING, DECOMP.	NPC-2631	5	8-	2B07	160667-56750	SCREW, ADJUSTING	NPC-2631	7	29	1B10
160590-21200	GEAR, CRANKSHAFT	NPC-2631	5	16	1B07	160690-03050	BREATHER	NPC-2631	2	1	1B04
160590-21210	GEAR, IDLE	NPC-2631	5	17	1B07	160690-11120	SPRING, VALVE	NPC-2631	2	10	1B04
160590-22010	PISTON W/RINGS	NPC-2631	5	20	1B07	160690-11180	RETAINER, SPRING	NPC-2631	2	11	1B04
160590-22011	PISTON W/RINGS	NPC-2631	5	20-	1B07	160690-11200	ARM, ROCKER	NPC-2631	2	12	1B04
160590-22300	PIN, PISTON	NPC-2631	5	26	1B07	160690-11220	PIVOT, ROCKER ARM	NPC-2631	2	13	1B04
160590-45120	CASE, FAN (WHITE)(14)	NPC-2631	9	12	1B13	160690-11270	BOLT	NPC-2631	2	14	1B04
160590-45130	CASE, FAN (WHITE)(14)	NPC-2631	9	12-	1B13	160690-11271	BOLT	NPC-2631	2	14-	1B04
160590-45211	COVER, REAR	NPC-2631	9	14	1B13	160690-11280	NUT M6X 0.5	NPC-2631	2	15	1B04

PART NO.	DESCRIPTION	CATALOG NO.	GRP. NO.	REF. NO.	LOC NO.	PART NO.	DESCRIPTION	CATALOG NO.	GRP. NO.	REF. NO.	LOC. NO.
160690-11290	PLATE, GUIDE	NPC-2631	2	16	1B04	160690-76580	PLATE, FRICTION	NPC-2631	9	24	1B13
160690-11300	BONNET	NPC-2631	2	18	1B04					30-	1B14
160690-11310	GASKET, BONNET	NPC-2631	2	19	1B04	160690-76590	PULLEY, STARTER	NPC-2631	9	36	1B14
160690-12510	CAP, AIR CLEANER	NPC-2631	4	2	1B06	160690-76591	PULLEY, STARTER	NPC-2631	9	36-	1B14
160690-12530	BODY, AIR CLEANER	NPC-2631	4	3	1B06	160690-76620	KNOB, STARTER	NPC-2631	9	33	1B14
160690-12600	CLEANER ASSY, AIR	NPC-2631	4	1	1B06	160690-76630	ROPE, STARTER	NPC-2631	9	32	1B14
160690-13200	GASKET, MUFFLER	NPC-2631	4	8	1B06	160690-76800	RATCHET	NPC-2631	9	22	1B13
160690-13550	BRACKET, MUFFLER	NPC-2631	4	9	1B06	160690-76801	RATCHET	NPC-2631	9	22-	1B13
160690-13900	COVER, ELBOW	NPC-2631	4	15	1B06	160690-76810	PIN, RATCHET	NPC-2631	9	23	1B13
160690-14560	SPRING, DECOMP.	NPC-2631	5	8	1B07	160690-76820	SHAFT	NPC-2631	9	29	1B14
160690-14570	SPRING, DECOMP.	NPC-2631	5	8-	1B07	160690-76830	CAP, KNOB	NPC-2631	9	34	1B14
160690-45011	FAN, COOLING	NPC-2631	9	11	1B13	160690-76840	PLATE, SLIDE	NPC-2631	9	35	1B14
160690-45200	COVER, CYLINDER	NPC-2631	9	13	1B13	160690-77250	SWITCH, STOP	NPC-2631	9	1	1B13
160690-55300	COCK ASSY, FUEL	NPC-2631	6	14	1B08	160690-78010	PLUG, SPARK	NPC-2631	9	3	1B13
160690-55310	COCK ASSY, FUEL	NPC-2631	6	15	1B08	160690-78020	PLUG, SPARK	NPC-2631	9	3-	1B13
160690-55320	LEVER, FUEL COCK	NPC-2631	6	16	1B08	160690-78230	CORD, STOP	NPC-2631	9	8A	1B13
160690-55330	SHIFT, FUEL COCK	NPC-2631	6	17	1B08	160692-55300	COCK ASSY, FUEL	NPC-2631	6	14-	1B08
160690-55460	DAMPER, FUEL TANK	NPC-2631	6	20	1B08	160692-56560	VALVE, NEEDLE (RUBBER	NPC-2631	7	35	1B11
160690-56160	SPACER	NPC-2631	7	34	1B11	160692-56620	O-RING	NPC-2631	7	32C	1B11
160690-56650	LEVER, CHOKE	NPC-2631	7	16-	1B10	160692-56640	SHAFT, THROTTLE	NPC-2631	7	13	1B10
160690-59360	PIPE, FUEL	NPC-2631	6	26	1B08	160692-56700	SEAL, RUBBER	NPC-2631	7	32	1B10
160690-59400	PROTECTOR, PIPE	NPC-2631	6	33	1B09	160692-56710	SCREW	NPC-2631	7	7	1B10
160690-61300	SPINDLE, GOVERNOR	NPC-2631	8	2	1B12	160692-56730	BOLT	NPC-2631	7	22-	1B10
160690-61310	SHAFT, GOV. LEVER	NPC-2631	8	3	1B12	160692-56761	BODY, COCK (A	NPC-2631	7	32D	1B11
160690-61450	WASHER	NPC-2631	8	4	1B12	160692-56770	HOSE	NPC-2631	7	31	1B10
160690-61600	GEAR ASSY, GOV.	NPC-2631	8	5	1B12	160692-56800	SEAL, RUBBER	NPC-2631	7	32A	1B10
160690-66081	LEVER ASSY, CONTROL	NPC-2631	8	13	1B12	160693-13510	MUFFLER	NPC-2631	4	11	1B06
160690-66101	CONTROL ASSY	NPC-2631	8	12	1B12	160693-13540	COVER, MUFFLER	NPC-2631	4	12	1B06
160690-66111	BASE ASSY, CONTROL	NPC-2631	8	18	1B12	160693-13600	MUFFLER W/COVER	NPC-2631	4	10	1B06
160690-66140	BASE, CONTROL	NPC-2631	8	19	1B12	160699-45010	FAN, COOLING	NPC-2631	9	11-	1B13
160690-66141	BASE, CONTROL	NPC-2631	8	19-	1B12	160700-78040	CAP, PLUG	NPC-2631	9	4	1B13
160690-66142	BASE, CONTROL	NPC-2631	8	19-	2B12	160700-78050	TERMINAL, PLUG	NPC-2631	9	5	1B13
160690-66143	BASE, CONTROL	NPC-2631	8	19-	3B12	160700-78720	GROMMET	NPC-2631	9	9	1B13
160690-66160	WASHER, STOP	NPC-2631	8	24	1B12	160702-56720	RING	NPC-2631	7	30	1B10
160690-66180	LEVER ASSY, GOVERNOR	NPC-2631	8	31	1B12	160708-07260	MARK, CAUTION	NPC-2631	3	4	1B05
160690-66200	LINK, THROTTLE	NPC-2631	8	34	1B12	160710-01760	CAP, W/LUB.OIL GAUGE	NPC-2631	1	18	1B03
160690-66210	SPRING, TENSION	NPC-2631	8	35	1B12	160710-23201	BOLT, ROD	NPC-2631	5	30	1B07
160690-66300	PANEL	NPC-2631	8	36	1B12	160710-55061	CAP ASSY, FUEL TANK	NPC-2631	6	4	1B08
160690-66310	PANEL	NPC-2631	8	36-	1B12	160710-55360	RING	NPC-2631	6	19B	1B08
160690-76050	STARTER ASSY, RECOIL	NPC-2631	9	18	1B13	160710-55370	GASKET	NPC-2631	6	19C	1B08
160690-76051	STARTER ASSY, RECOIL	NPC-2631	9	18-	1B13	160710-55382	FILTER	NPC-2631	6	19D	1B08
160690-76250	STARTER ASSY, RECOIL	NPC-2631	9	19	1B13	160710-55390	BOWL, STRAINER	NPC-2631	6	19E	1B08
160690-76251	RECOIL ASSY	NPC-2631	9	19-	1B13	160710-78710	CLAMP, CORD	NPC-2631	6	28	1B08
160690-76510	CASE, STARTER	NPC-2631	9	20	1B13	160735-59350	F. O. PIPE (A)	NPC-2631	6	26-	1B08
160690-76511	CASE COMP., STARTER	NPC-2631	9	20-	1B13	160735-59360	PIPE, FUEL	NPC-2631	6	32	1B09
160690-76520	REEL	NPC-2631	9	21	1B13	160760-12530	ELEMENT	NPC-2631	4	4	1B06
160690-76521	REEL	NPC-2631	9	21-	1B13	160762-55150	GAUGE, FUEL	NPC-2631	6	13	1B08
160690-76530	GUIDE, RATCHET	NPC-2631	9	25	1B13	160769-56620	FLOAT ASSY	NPC-2631	7	11	1B10
160690-76531	GUIDE, RATCHET	NPC-2631	9	24-	1B13	160769-56640	BODY, FLOAT CHAMBER	NPC-2631	7	20	1B10
160690-76540	SPRING, SPIRAL	NPC-2631	9	26	1B13	160769-56660	BOLT	NPC-2631	7	22	1B10
160690-76550	WASHER, THRUST	NPC-2631	9	28	1B14	160792-56600	GASKET	NPC-2631	7	23-	1B10
160690-76560	SPRING, FRICTION	NPC-2631	9	27	1B13	160798-07100	LABEL, FINGER START	NPC-2631	3	2	1B05
160690-76561	SPRING, FRICTION	NPC-2631	9	27-	1B13	160810-03180	PIPE, BREATHER	NPC-2631	2	2	1B04
160690-76570	SPRING, RETURN	NPC-2631	9	35A	1B14	160810-56580	RING, CHOKE SHAFT	NPC-2631	7	17	1B10

PART NO.	DESCRIPTION	CATALOG NO.	GRP. NO.	REF. NO.	LOC. NO.	PART NO.	DESCRIPTION	CATALOG NO.	GRP. NO.	REF. NO.	LOC. NO.
160810-56590	RING, CHOKE LEVER	NPC-2631	7	18	1B10	22417-250200	COTTER PIN 2.5X20	NPC-2945	16	8	1D06
160810-56670	SCREW	NPC-2631	7	3	1B10	22417-250250	COTTER PIN 2.5X25	NPC-2945	5	12	1C09
160903-56670	SCREW	NPC-2631	7	4	1B10				15	12	1D05
181230-56380	SPRING	NPC-2631	7	8	1B10	22417-400300	COTTER PIN 4.0X30	NPC-2945	19	25	1D11
				28	1B10	22512-040120	KEY 4X 12	NPC-2631	5	10	1B07
20106-060122		NPC-2631	6	22- 2	1B08	22512-040160	KEY 4X 16	NPC-2631	5	19	1B07
22137-060000	WASHER 6, POLISHED	NPC-2631	8	28	1B12	22512-050300	KEY 5X 30	NPC-2631	5	32	1B07
		NPC-2945	16	13	1D06	22550-050251	KEY 5X25	NPC-2945	2	18	1C04
			18	9	1D08	22857-200100	SCREW 2.0X10,TAPPING	NPC-2631	9	2	1B13
22137-080000	WASHER 8, POLISHED	NPC-2945	19	13	1D11	24101-060034	BALL BEARING	NPC-2945	4	5	1C08
			2	14	1C04				5	5	1C09
			6	10	1C10				7	4	1C11
			12	7	1C16	24101-060054	BALL BEARING	NPC-2945	10	15	1C14
			15	15	1D05	24101-062024	BALL BEARING	NPC-2945	7	6	1C11
			16	6	1D06	24101-062034	BALL BEARING	NPC-2945	8	6	1C12
			22	4	1D09	24101-062040	BALL BEARING	NPC-2631	9	3	1C13
22137-100000	WASHER 10,POLISHED	NPC-2945	3	13	1C06				1	6	1B03
			5	13	1C09				12		1B03
			18	1C09	1C09	24104-062024	BALL BEARING	NPC-2945	1	5	1C03
			15	11	1D05	24311-000140	O-RING 1A P-14.0	NPC-2945	12	5	1C16
22137-120000	WASHER 12,POLISHED	NPC-2945	19	21	1D11				13	10	1D01
22137-160000	WASHER 16,POLISHED	NPC-2945	1	8	1C03	24311-000180	O-RING 1A P-18.0	NPC-2631	1	20	1B03
22217-060000	SPRING WASHER 6	NPC-2945	11	3	1C15	24421-173007	SEAL TC17 30 07, OIL	NPC-2945	7	3	1C11
22217-080000	SPRING WASHER 8	NPC-2945	6	15	1C10	24421-173507	SEAL TC17 35 07, OIL	NPC-2945	8	10	1C12
			12	8	1C16	24421-173508	SEAL TC17 35 08, OIL	NPC-2945	4	7	1C08
22217-120000	WASHER 12,SPRING	NPC-2945	6	19	1C10				5	7	1C09
22242-000140	CIRCLIP 14	NPC-2945	11	5	1C15	24421-254708	SEAL TC25 47 08, OIL	NPC-2945	10	16	1C14
22242-000150	CIRCLIP 15	NPC-2945	1	4	1C03	25123-003101	V-BELT	NPC-2945	2	2	1C04
22242-000160	CIRCLIP 16	NPC-2945	1	9	1C03	26014-060259	BOLT 6X25 W/PL.&SP.W	NPC-2945	18	3	1D08
			16	11	1D06					7	1D08
22242-000170	CIRCLIP 17	NPC-2945	4	6	1C08	26016-060124	BOLT 6X12 W/L.W.	NPC-2945	11	10	1C15
			5	6	1C09	26016-060164	BOLT 6X16 W/L.W.	NPC-2945	2	16	1C04
			9	4	1C13	26016-080204	BOLT M 8X 20	NPC-2945	6	14	1C10
22242-000250	CIRCLIP 25S	NPC-2945	10	8	1C14	26018-080164	BOLT M 8X 16	NPC-2945	2	5	1C04
			15	6	1D05				6	21	1C10
22242-000500	CIRCLIP 50	NPC-2945	10	5	1C14	26018-080204	BOLT M 8X 20	NPC-2945	3	7	1C06
22252-000130	CIRCLIP 13	NPC-2631	5	27	1B07					22	1C06
22252-000350	CIRCLIP 35	NPC-2945	1	3	1C03				14	15	1D03
22252-000470	CIRCLIP 47	NPC-2945	10	17	1C14				15	24	1D05
22312-080120	PARALLEL PIN 8X12	NPC-2631	1	4	1B03				19	8	1D11
22351-030030	SPRING PIN 3X30	NPC-2945	17	10	1D07				22	7	1D09
22351-050025	SPRING PIN 5X25	NPC-2945	12	4	1C16	26018-080254	BOLT M 8X 25	NPC-2945	2	11	1C04
22351-050030	SPRING PIN 5X30	NPC-2945	17	8	1D07				3	10	1C06
22360-080000	SNAP PIN 8	NPC-2945	15	16	1D05				14	18	1D03
			16	7	1D06					18- 1	1D03
				17	1D06				19	18	1D11
			22	10	1D09	26018-100254	BOLT M10X 25	NPC-2945	14	2	1D03
22360-160000	SNAP PIN 16	NPC-2945	15	3	1D05	26051-060002	NUT M 6	NPC-2945	19	14	1D11
22372-080000	SNAP PIN (JASO 8)	NPC-2631	8	10	1B12	26051-080002	NUT M 8	NPC-2945	2	15	1C04
22417-200160	COTTER PIN 2.0X16	NPC-2945	16	14	1D06				14	22	1D03
			18	10	1D08	26051-100002	NUT M10	NPC-2945	3	4	1C06
22417-200200	COTTER PIN 2.0X20	NPC-2631	6	18	1B08					14	1C06
22417-250200	COTTER PIN 2.5X20	NPC-2945	15	21	1D05					14- 1	1C06

PART NO.	DESCRIPTION	CATALOG NO.	GRP. NO.	REF. NO.	LOC NO.	PART NO.	DESCRIPTION	CATALOG NO.	GRP. NO.	REF. NO.	LOC. NO.
26051-100002	NUT M10	NPC-2945	3	14-2	1C06	26476-060142	BOLT M 6X 14,TAPPING	NPC-2631	9	16	1B13
			5	19	1C09					17	1B13
			14	9	1D03	26476-060252	BOLT M 6X 25,TAPPING	NPC-2631	1	22	1B03
26051-120002	NUT M12	NPC-2945	4	9	1C08				6	23	1B08
				11	1C08	26476-060302	BOLT M 6X 30,TAPPING	NPC-2631	9	10	1B13
			5	9	1C09	26557-040102	SCREW M 4X 10	NPC-2631	6	19	1B08
26052-100002	NUT M10 W/SPRING	NPC-2945	5	15	1C09	26557-060162	SCREW M 6X 16	NPC-2945	11	2	1C15
26106-060082	BOLT M 6X 8 PLATED	NPC-2631	4	13	1B06				19	12	1D11
			9	37	1B14	26647-100202	WING BOLT M10X20	NPC-2945	19	28	1D11
26106-060102	BOLT M 6X 10 PLATED	NPC-2631	6	22-1	1B08	26647-100302	BOLT 10X30,WING	NPC-2945	19	26-1	1D11
			8	37	1B12	26717-080002	NUT 8	NPC-2945	6	11	1C10
26106-060142	BOLT M 6X 14 PLATED	NPC-2631	6	22	1B08				12	9	1C16
26106-060162	BOLT M 6X 16 PLATED	NPC-2631	8	37-1	1B12	26717-100002	NUT M10	NPC-2945	13	5	1D01
26106-060202	BOLT M 6X 20 PLATED	NPC-2631	2	20	1B04	26717-120002	NUT M12	NPC-2945	6	18	1C10
26106-060302	BOLT M 6X 30 PLATED	NPC-2631	5	30-1	1B07	26757-060002	NUT M 6	NPC-2631	8	30	1B12
26106-060352	BOLT M 6X 35 PLATED	NPC-2631	2	21	1B04	26757-080002	LOCK NUT M 8 PLATED	NPC-2945	15	19	1D05
26106-080142	BOLT M 8X 14 PLATED	NPC-2631	4	17	1B06				16	4	1D06
26106-080202	BOLT M 8X 20 PLATED	NPC-2631	5	33	1B07				22	6	1D09
26116-080452	BOLT M 8X 45 PLATED	NPC-2945	2	13	1C04					11	1D09
26116-080552	BOLT M 8X 55 PLATED	NPC-2945	22	3	1D09	26757-100002	LOCK NUT M10	NPC-2945	5	16	1C09
26117-040088	BOLT M 4X 8 PLATED	NPC-2631	7	25	1B10				14	11	1D03
			8	17	1B12	28110-100120	WRENCH 10X12	NPC-2631	3	12	1B05
26117-040257	BOLT M 4X 25	NPC-2631	8	23	1B12	29610-000650	CLAMP, SPEED 065	NPC-2631	9	38	1B14
26117-080302	BOLT M 8X 30	NPC-2945	6	13	1C10	29610-000950	CLAMP, SPEED 095	NPC-2631	9	39	1B14
26117-081102	BOLT M 8X110 PLATED	NPC-2945	6	9	1C10	43400-500400	SEAL WASHER 6	NPC-2631	6	24	1B08
26117-081202	BOLT M 8X120 PLATED	NPC-2945	6	12	1C10	7N1292-35000	FLOAT RING ASSY.	NPC-2945	4	2	1C08
26117-100254	BOLT M10X25 PLATED	NPC-2945	3	3	1C06	7N1292-35010	FLOAT RING SET	NPC-2945	4	1	1C08
26117-100702	BOLT M10X 70 PLATED	NPC-2945	5	17	1C09	7N1292-36000	LWR.TRANK ROLLER ASY	NPC-2945	5	2	1C09
26117-101902	BOLT M10X190 PLATED	NPC-2945	3	15-1	1C06	7N1292-36010	LWR.TRANK ROLLER SET	NPC-2945	5	1	1C09
				15-2	1C06	760590-01500	COVER ASSY, SIDE	NPC-2631	1	10	1B03
26216-080182	STUD M 8X 18 PLATED	NPC-2631	2	17	1B04	760590-01561	BLOCK ASSY, CYLINDER	NPC-2631	1	1	1B03
26347-060002	U-NUT M 6	NPC-2631	8	29	1B12	760590-21700	CRANKSHAFT ASSY	NPC-2631	5	14	1B07
26347-080002	U-NUT M 8	NPC-2945	22	5	1D09	760590-22500	RING SET, PISTON	NPC-2631	5	22	1B07
26347-120002	U-NUT M12	NPC-2945	19	22	1D11	760590-22501	RING SET, PISTON	NPC-2631	5	22-1	1B07
26366-060002	NUT M 6	NPC-2631	4	7	1B06	760590-23700	ROD ASSY, CONNECTING	NPC-2631	5	28	1B07
			8	33	1B12	760590-55700	TANK, FUEL (RED)(50)	NPC-2631	6	2	1B08
26366-080002	NUT M 8	NPC-2631	4	18	1B06	760590-55710	TANK ASSY, FUEL	NPC-2631	6	2-1	1B08
			9	41	1B14						
26367-060002	NUT M 6	NPC-2631	9	30	1B14						
		NPC-2945	3	19	1C06						
			14	6	1D03						
			17	5	1D07						
26367-080002	U-NUT M 8	NPC-2945	2	12	1C04						
			3	8	1C06						
				23	1C06						
			14	16	1D03						
				16-1	1D03						
			19	9	1D11						
			22	8	1D09						
26367-100002	U-NUT M10	NPC-2945	14	3	1D03						
26476-060142	BOLT M 6X 14,TAPPING	NPC-2631	6	29	1B09						
				31	1B09						
			8	38	1B12						
			9	15	1B13						



YANMAR AGRICULTURAL EQUIPMENT CO.,LTD.

1-32, CHAYAMACHI, KITA-KU, OSAKA, 530, JAPAN